

Movements of Corrie in 2011

09 January 2011: Back near Kinlochewe

Corrie returned to the glen east of Heights of Kinlochewe on 8th and 9th January.

17 January 2011: Same area

Still in same area west of Loch Fannich.



21 January 2011

Remained in the same glen west of Loch Fannich.

28 January 2011: No change

Corrie remained in Strath Chrombuill, living in an area of 9 square km; 3 GPS signals 2p - 4pm on 27th January.



14 February 2011: Moved north and back again

On 10th February, Corrie was at Alladale Estate and then moved back south on 12th to be 4 km south-west of Deanich Lodge. By 14th he was in the hills north of the eastern end of Loch Fannich.

18 February 2011: No change

Corrie was in the glen north of Loch Rosque on 15th and 16th, and then on west end of Fionn Bhein on 17th.

01 March 2011

Corrie has remained in the same area with further movement to the south side of Groban on 21st February.



February 19th-27th

08 March 2011

Still in the same area but ranging more widely this week within an area of 19 square km.



March 4th-8th

19 March 2011: Back to Easter Ross

Corrie was in the area east of the Heights of Kinlochewe until early on 18th March. At 10am he was to the east flying east over plantations north of Loch Luichart, and then at 4pm was over the west end of Loch Morie in Easter Ross. An hour later he was in the hills west of the Struie road, probably just SW of the wind farm.

26 March 2011: North to Caithness

Corrie flew north to an area north-east of Lairg, just north of Loch Dola and remained there on 20th and 21st March. On the 22nd he flew North East and settled on Borrobol estate in Strath Helmsdale. On the afternoon of the 23rd, he continued North East, and flew to the south of Kinbrace to Knockfin Heights - a remote area of tundra-like boglands. During the next 2 days he ranged in the interior between Forsinaird in the west and Dalnawhillan Lodge and Glutt Lodge. On the 25th at 2 PM he had flown to the south-east and was just north of Morven, the highest mountain in Caithness.



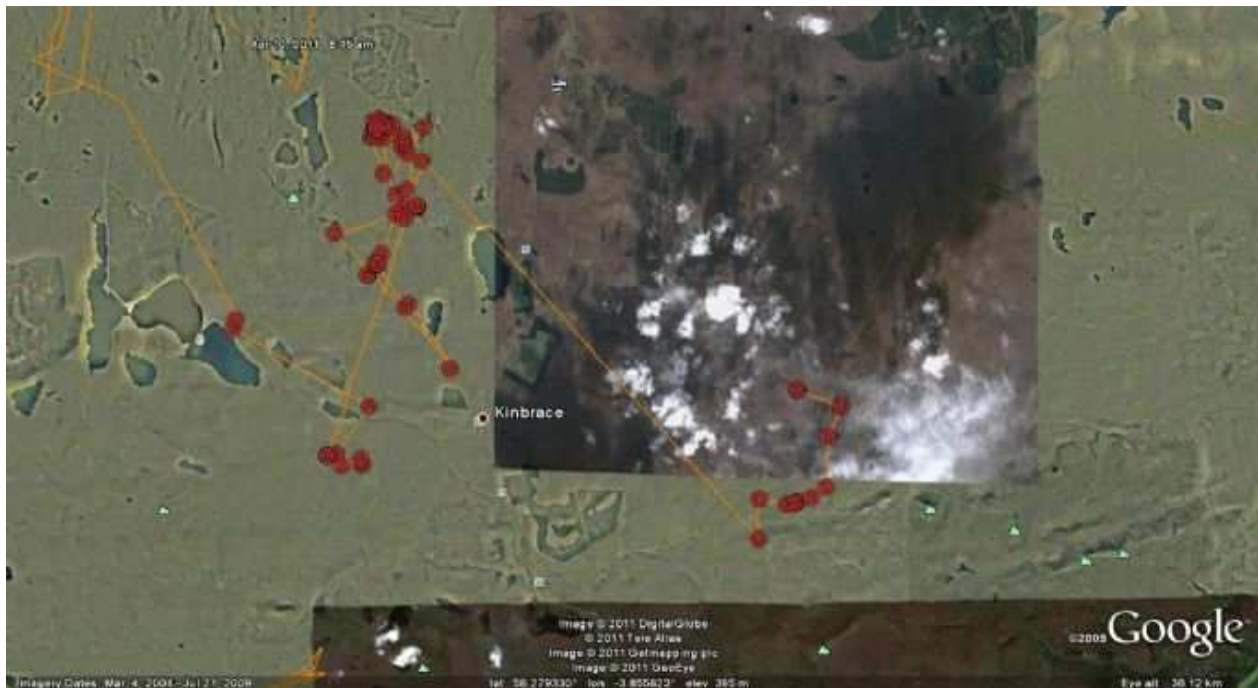
March 18th-25th

03 April 2011: Back south

Back south to Ben Armine, then north of Lairg before turning NW and flying past parents' home range and settling to the north of Loch Naver.

10 April 2011: Caithness

Corrie was around the Ben Griams (home range of 106 & 107) from 4th to 8th, and then went SE onto Berriedale Estate, and then north on to Knockfin.

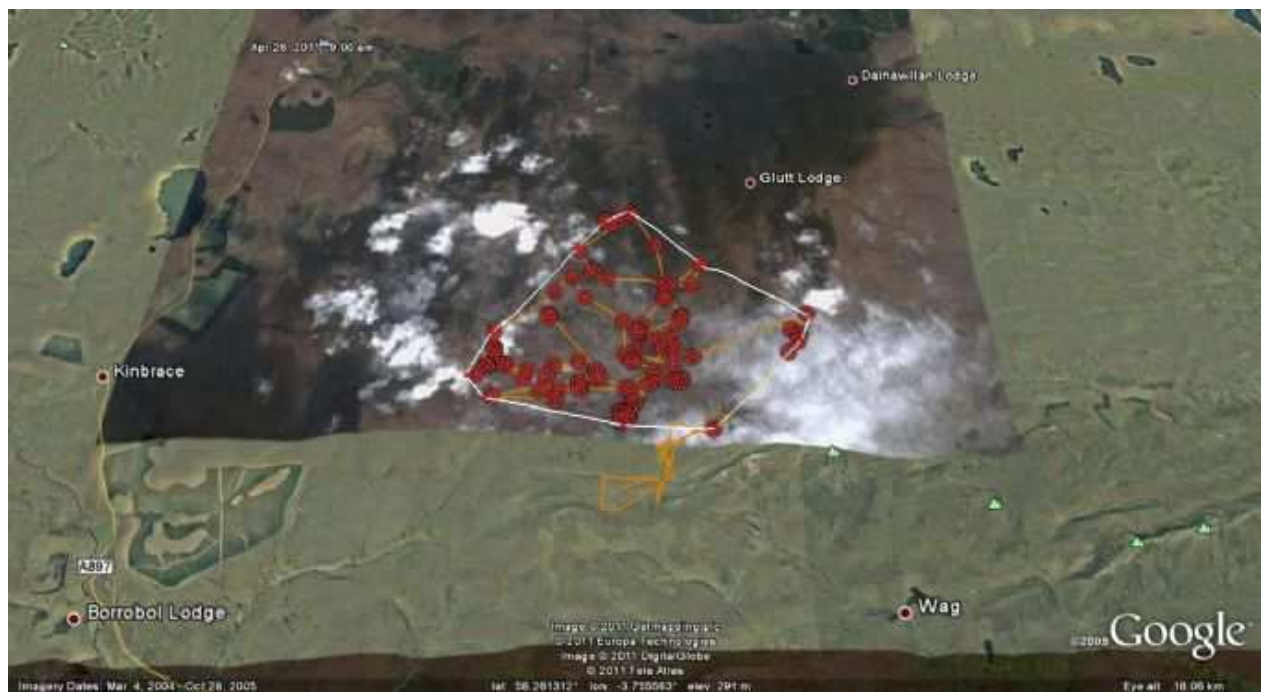


18 April 2011

Living in the area north and west of Morven in Caithness - range of 26 km².

25 April 2011: Remained in Caithness

Corrie spent the whole time, 21st to 25th of April, on Knockfin Heights to the north-west of Morven in Caithness, with in a range of 24 km².



April 21st-25th

29 April 2011: Big circuit of Sutherland

Corrie left the Morven area at midday on 26th and roosted that night south of the Hope road; next morning he flew west to Sabhal Mor then turned east and roosted that night just east of Loch Loyal. Next day he flew in the afternoon on past Badanloch and returned to Knockfin Heights.



April 26th-29th

05 May 2011: No change

Corrie remained in the same area, mainly to the North West of Morven.

12 May 2011: Remains at Knockfin Heights

Tonight Corrie was just north of Morven, after a trip north to Glutt Lodge area over 10th-11th May, and previously over Knochfin Heights.



Corrie's tracks May 4th-12th

15 May 2011: Moves towards coast

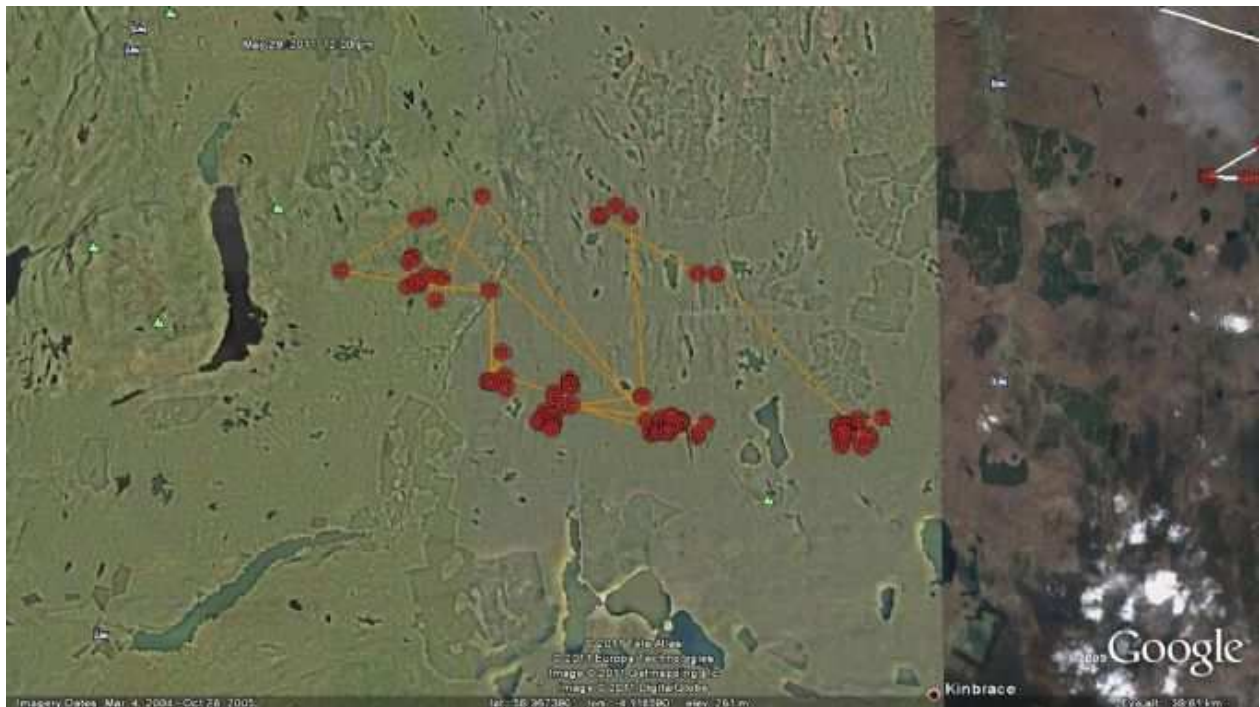
Corrie continued to live north of Morven and at 8pm on 14th moved down to the glens inland from Ousdale, just 5 km from the Moray Firth coast.

18 May 2011: NW to Ben Griams

Corrie was less than 2 km from the coast around Chreag Thoraidh, and then on 17th left that area and flew via Kinbrace to the east side of the Ben Griams.

29 May 2011: Flow Country

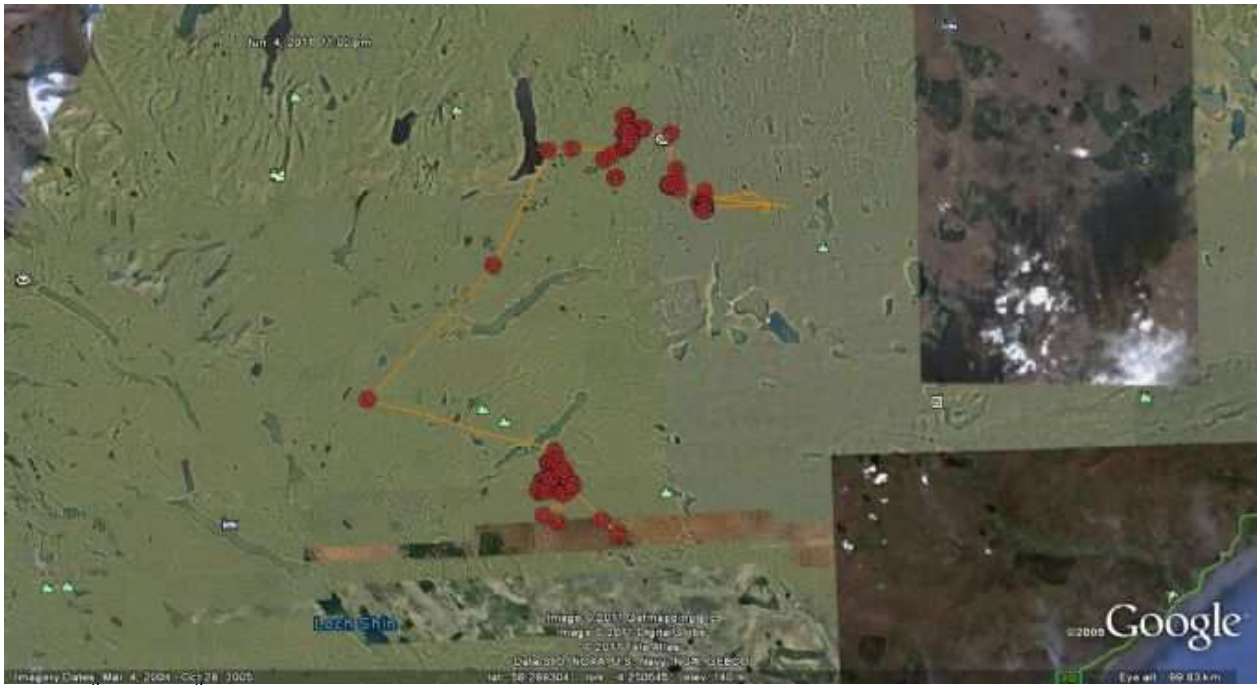
Corrie is living in remote Flow Country between the forests of Rimsdale in the south and Strathy and Borgie in the north.



May 22nd-29th

04 June 2011: Central Sutherland

He crossed Strathnaver on 28th May and then on afternoon 30th to Loch Loyal and then south to the hills north of the Crask Inn, then over Klibreck and settled down to the SE of Loch Choire.



May 28th-June 4th

23 June 2011: East Sutherland

Corrie has been living between Crask Inn, south of Klibreck east to upper Strathbrora.



June 12th-22nd

10 July 2011: North Sutherland

Went north to Bowside Lodge area on 7th and 8th, then flew west to west side of Strathnaver, and then drifted south through the flows to be north of Loch Naver at 5am on 10th July.



June 28th-July 10th

22 July 2011: East to Knockfin

Corrie flew east across the Flows on 12th to east side of Strath Halladale, and then subsequently south to Knockfin Heights.



July 12th-20th

02 August 2011: To Loch Naver area

After spending a lot of time in NE Sutherland and Caithness, 107 flew west and from 27th relocated to the moorland north and south of Loch Naver.

22 August 2011: Ranging widely in the Flow Country

Corrie has been ranging widely between Loch Choire, Loch Naver and Caithness in a recent range of 670 square km.

29 August 2011: Drifting south into SE Sutherland

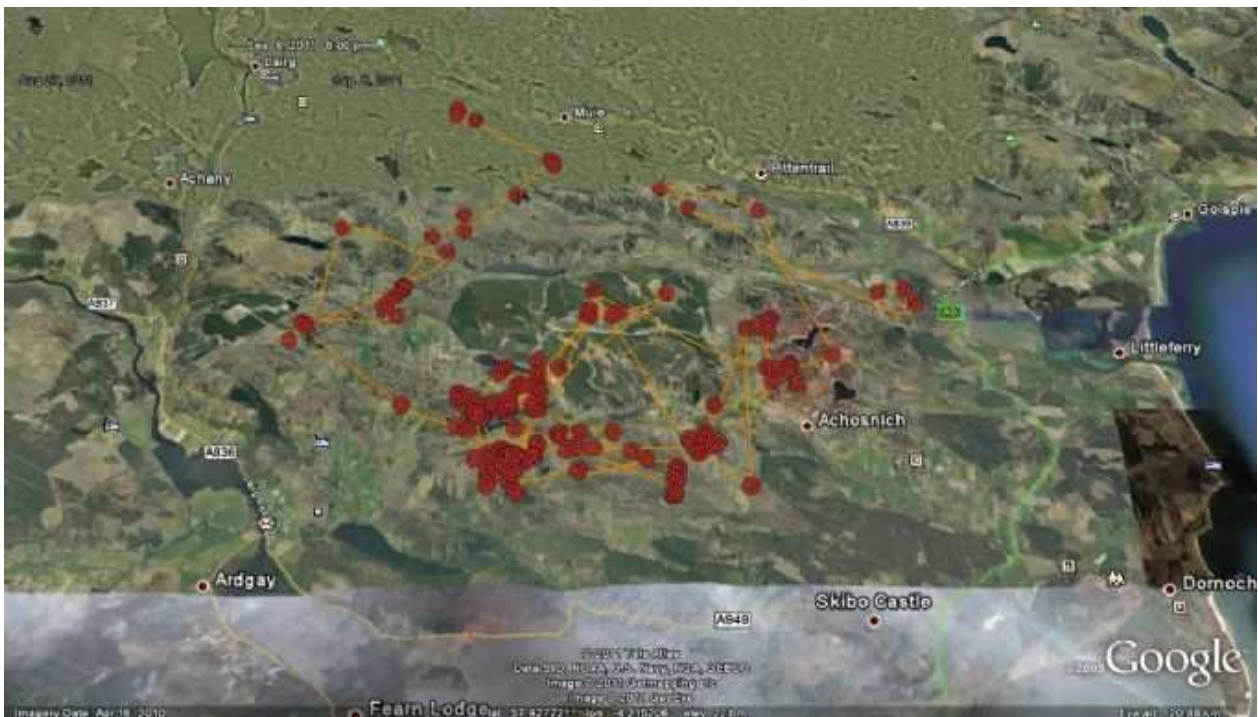
At 2pm on 23rd flew back west towards Loch Choire and then south into the large area to the east of Crask Inn. At midday on 27th flew south towards Muie south of the Lairg road and at 4pm on 29th flew onto Craighton, 5 km north of Bonar Bridge.



August 23rd-29th

09 September 2011: Remained in SE Sutherland

Corrie remained in the low hills between Bonar Bridge and Pittentrail, mainly around Loch Buie, with a visit to the hill above Cambusmore on 8th.



August 28th-September 8th

17 September 2011: Ranging in SE Sutherland and Easter Ross

Corrie was in the Skibo - Pittentrail moors from the 8th to 15 September, when he took a tour south past the Falls of Shin to the hills to the west of Ardgay and Fearn in East Ross. At midday on the 16th he was just north of the new windfarm on the Struie and then flew back over the Dornoch Firth to the hills above Spinningdale. He had visited some quite low altitude areas.

26 September 2011: Loop in Sutherland

Moved north to area north of Garvault 23rd-24th, then on 24th flew north and west over Borgie Forest to the north of Loch Loyal, then west of Ben Loyal to the hills north of Loch Meadie. On 25th south by Gobernuisgach and so to Loch Merkland and the settled west and north of Loch Shin.



September 18th-26th

30 September 2011: Moved to south of Ben Hope

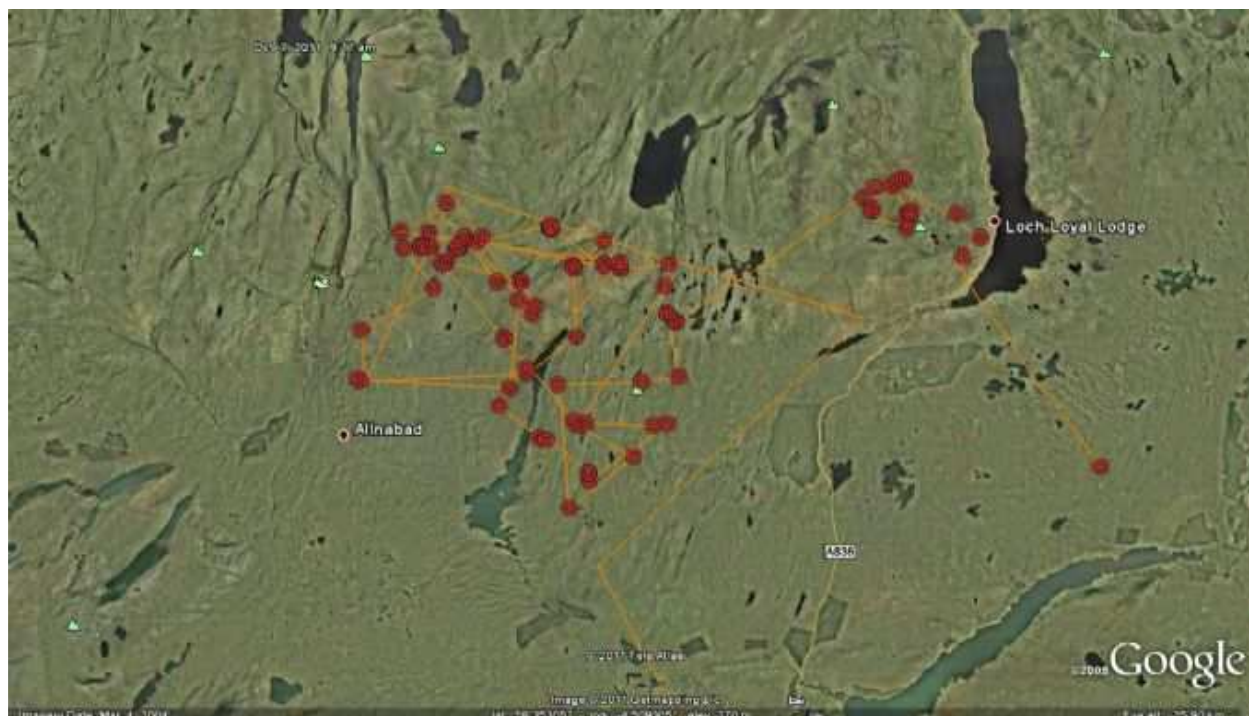
Corrie left the Upper Brora watershed that 11 AM on the 28th then flew to an area between Loch Meadie and Ben Hope. Still settled there at 4 PM on the 30th.



September 28th-30th

06 October 2011

Corrie stayed in the Meadie area to 5th October and then flew NE to Ben Loyal until the 6th, when at 5 PM it was perched north of the top end of the Loch Naver.



September 28th-October 6th

20 October 2011: Down to Borrobol

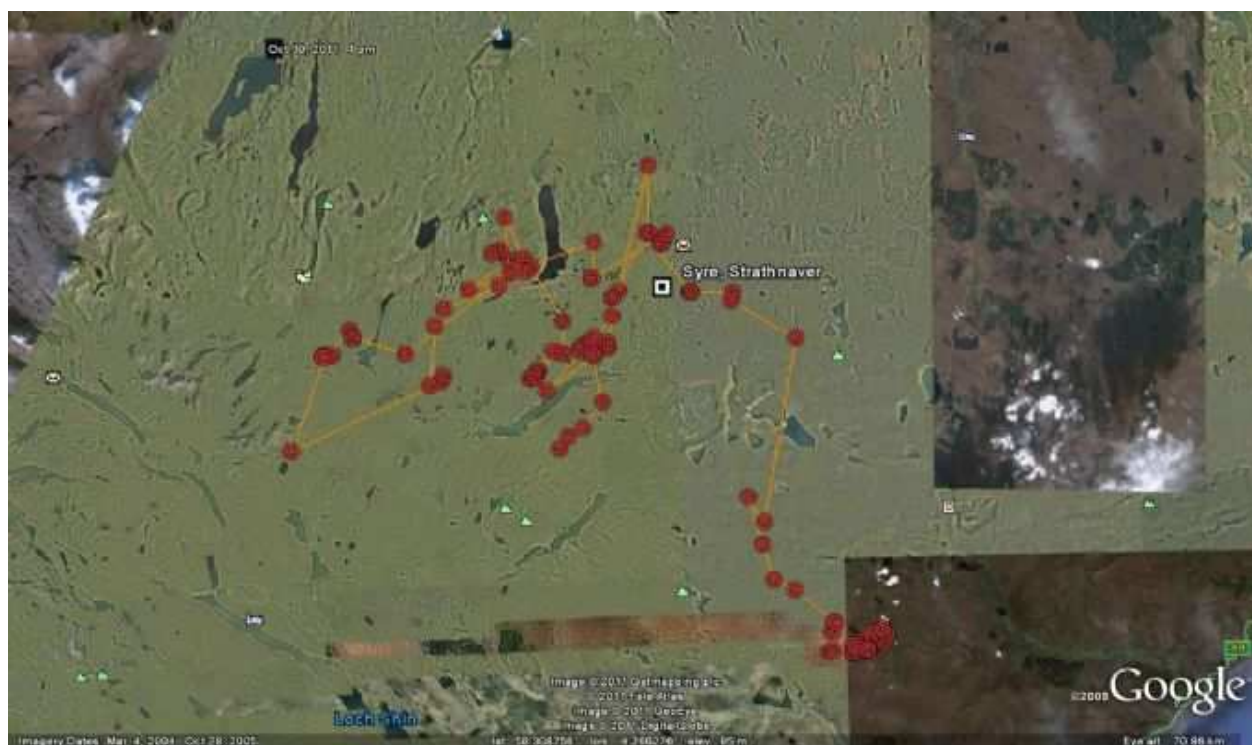
On 9th October, Corrie left Borgie and flew via the Ben Griams to SW of Borrobol and settled in that area to 19th.



October 9th-19th

30 October 2011: Ranging in north Sutherland

Corrie flew north n 21st and by evening was east of Syre; on 2ndn down to Loch Naver and then on 24th to Ben Loyal, at 4pm on 25th went as far south of Ben Hee and back. On 26th was between Loch Loyal and Syre, and then on 28th north to Borgie forest, but back to Naver on 29th and then to south of Loch Naver on 30th.



October 21st-30th

14 November 2011: Ranging

Ranging between Loch Choire, Upper Strathbrora and Meall Chaise.

27 November 2011: Sutherland

Corrie was north of Kylesku on 17th November, then on 23rd moved east to the west end of Loch Shin, and from 25th was either side of Loch Meadie, north of Altnaharra.

04 December 2011: No change

Remained in Loch Meadie area.

14 December 2011: At Borgie plantations

Corrie spent this period in and around the Borgie plantations in north Sutherland.

18 December 2011: Loch Loyal area

Corrie was between south of Tongue and Ben Loyal in this period.

26 December 2011: No change

Still in the area south of Tongue.

30 December 2011: Down to Lairg

Corrie left North Sutherland at 7.13pm on 29th December was in the headwaters of the Shinary, north of West Langwell and NE of Lairg.