

Movements of 106 in 2011

09 January 2011: Remains at home

The female eaglet continues to live around the Ben Griams within the parents' home range.

21 January 2011

She was a little to the west of the main range today, being 3km north of Loch Rimsdale.

25 January 2011: No change

Between Loch Rimsdale and Loch Strathy on 25th January.

02 February 2011: Off on her travels

The young female eagle 106 has left her home range in the Flow Country after a stay of just over six months with its parents (her sibling 107 left 3 months earlier). She flew west and at 3pm on 27th she was near Ben Auskaird, 6 km southeast of Scourie in West Sutherland, she stayed there until 10am on 28th. By 4pm, she was by a loch southeast of Ben More Assynt, where she stopped until moving to upper Strathoykell, north of Duchally, at 10am on 30th. By 4pm that day she had gone further to the east and was southeast of Glencalvie Lodge. Again she lingered and her next move was south to Ben Wyvis, where she arrived 4pm on 1st February. She roosted that night a little further north in a craggy valley to the west of Wyvis Lodge. Next day she flew west and at 4pm on 2nd was just to the northeast of Aultguish Inn on the Ullapool road. Is she going to turn into a traveller like her brother 107?



January 25th to February 2nd

07 February 2011: To Wester Ross

On 3rd February, 106 flew west to Rhiddoroch Estate, northeast of Ullapool, by 4pm and was in the same area north of Rhiddoroch Lodge by latest location 4am on 6th.



14 February 2011 Moving again

On 6th February at 4pm, 106 was flying north at 56km/h at 750m at the west end of Ben More Coigach and then returned to Rhiddoroch. Next day she moved down to the hills to the east of Loch Broom, and on the 8th at 10am and flown on and was south of Ullapool/Dundonnell road junction. She then flew across country to the cliffs above Loch Maree at the north end of Slioch, where she was still present on 10th.



February 6th to 10th

18 February 2011: Very mobile

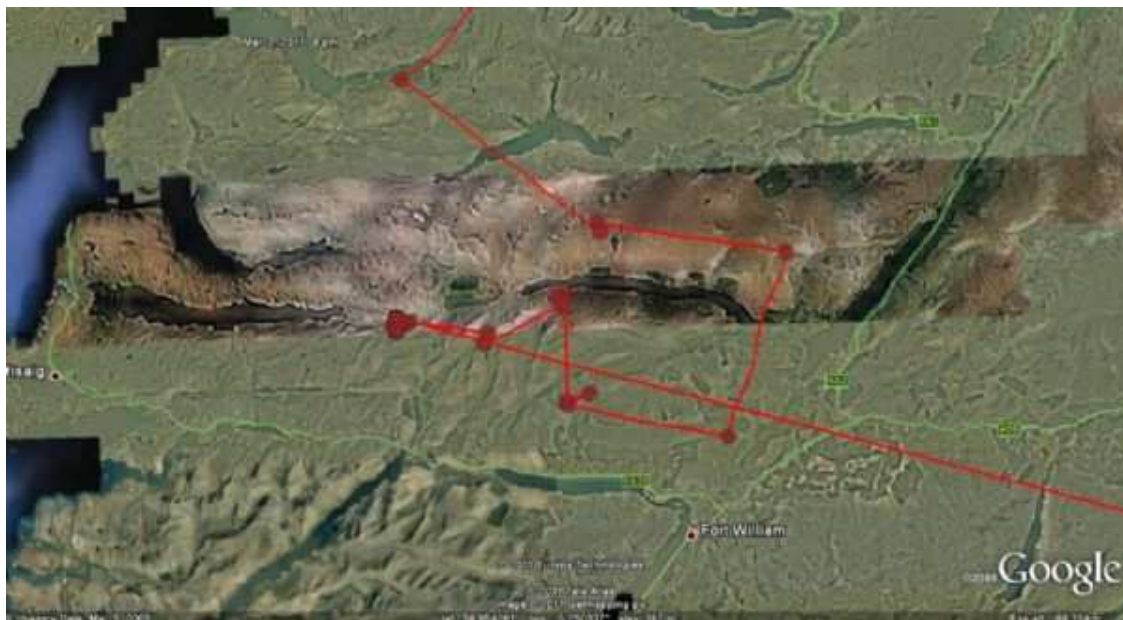
On the 15th, she left the Scardroy area and flew west via Achneshellach to Shieldaig in Wester Ross. She roosted the night near Loch an Loin and next day flew back east to Scardroy in Strathconon; then she flew a bit south to the west end of Glen Orrin. On 18th, she left there after 10am and flew southwest to reach the eastern end of Loch Hourn at 4pm.



February 15th to 18th

25 February 2011: Further movements

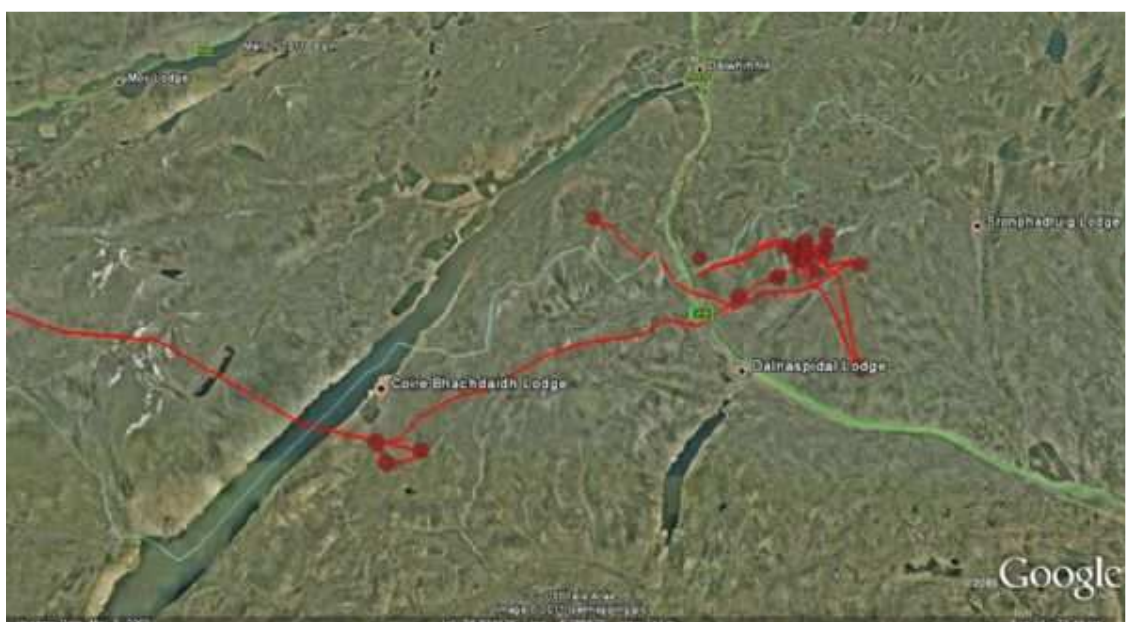
106 flew south on 20th February to Loch Arkaig, and later in the day in Glen Loy and further west on 21st and 22nd. On the 24th she was south of the west of Loch Arkaig, before moving west to the north slopes of Sgurr nan Coireachan, in the glen east of Loch Morar.



February 20th to 25th

02 March 2011: Flown to Drumochter

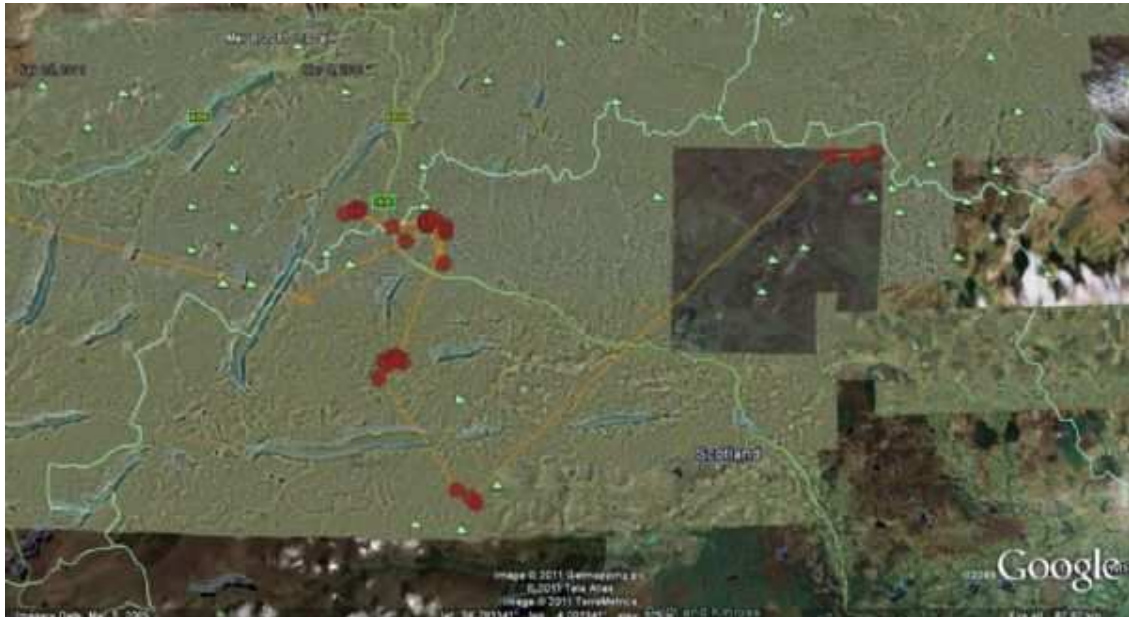
106 left Lochaber on 27th and roosted that night in the hills east of Loch Ericht, she moved next day to the hills north of Dalnacardoch (in part of Tom's winter range) and stayed there until 2nd March; but at 6pm that day she had flown north to roost on north side of A'Mharconaich, in west Drumochter.



February 28th to 2nd March

06 March 2011: On to the Cairngorms National Park

106 flew back to East Drumochter on 4th March and then south to be near Creag a'Mhadaidh at 4pm. After roosting in that area she flew further southeast to Schiehallion on 5th March. Next day she flew northeast across the A9 to the Loch Tilt area in North Perthshire.



10 March 2011: A further move and a chance meeting

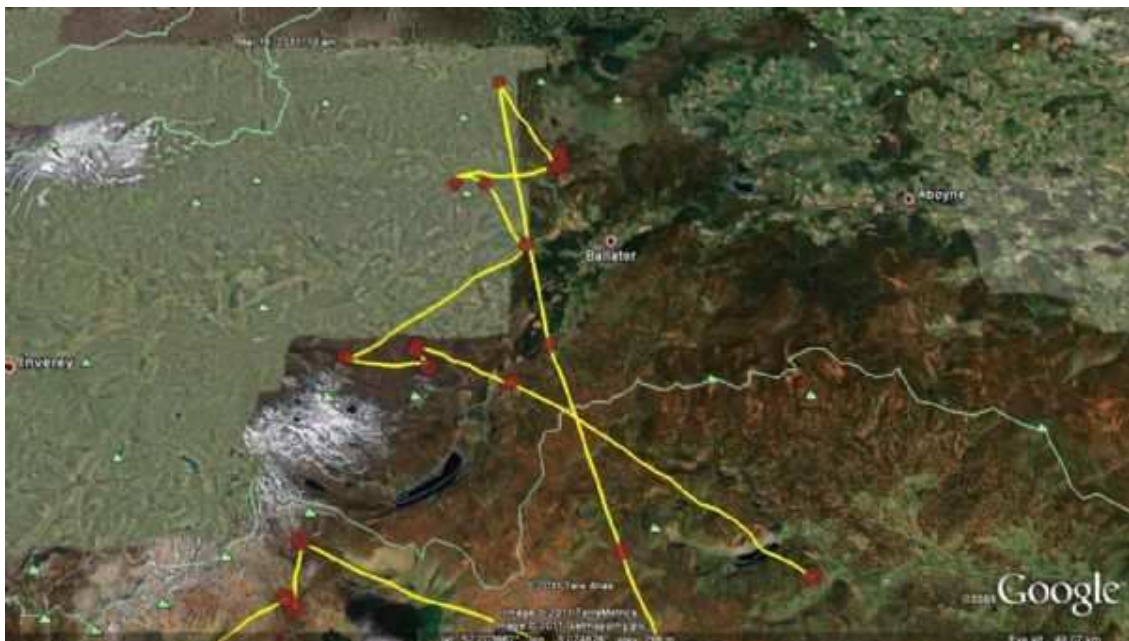
She departed the Loch Tilt area on the morning of 7th March and by 2pm was near Meall a'Choire Bhuidhe, and then flew east over the Spittal of Glenshee and roosted the night north of to Duchray Hill. Next day, she spent her time in the hills east of the Glenshee Road and then moved to the head of Glen Clova, where she roosted the night. On the 9th March, she flew east along the north side of Glen Clova and had passed by Loch Wharral at 8am. At this very time brother was on the opposite side of the Glen, just 4.6 km away and there is no doubt they would have seen each other. She then spent the rest of that day and this morning in the hills on that side of Glen Clova, above Rottal.



106 - yellow track & 107 - red track

14 March 2011: Followed brother but turned back

By 2pm 106 headed north on the same track as her brother 4 hours earlier; at 4pm over Glen Muick and then at 6pm she was on the hills between the A939 road and Mona Gowan. She turned back and roosted near Lary, where she spent the next day. On 13th she was south of Gairnshiel Lodge at 8am and by midday had flown south over the River Dee and was over the hill above Littlemill on Balmoral Estate. She then went south to the S slopes of Lochnagar and remained there until next morning, when she crossed Glen Muick eastwards and at 10am today (14th) she was in Glenesk, SE of Loch Lee.



March 10th to 14th

18 March 2011: Heads north to Glenlivet and visited Pitfichie, Alford

106 was north of Lochnagar on Balmoral Estate on 13th, and then on 14th to 16th was around Loch Lee and Hunthill, before moving on east to Glen Dye Estate and then briefly on Milden Estate on 17th March, before flying strongly north at 2pm. At 4pm she was over Pitfichie Forest east of Alford, which is a surprisingly 'low ground' area for eagles. She flew east and was perched near Cairn William at 6pm and then roosted the night in woodland to the west above Gateside. Next day she flew west to the Cabrach and at midday and 2pm was either side of The Buck, and then flew on towards Glenlivet estate.



106 path 13th to 18th March



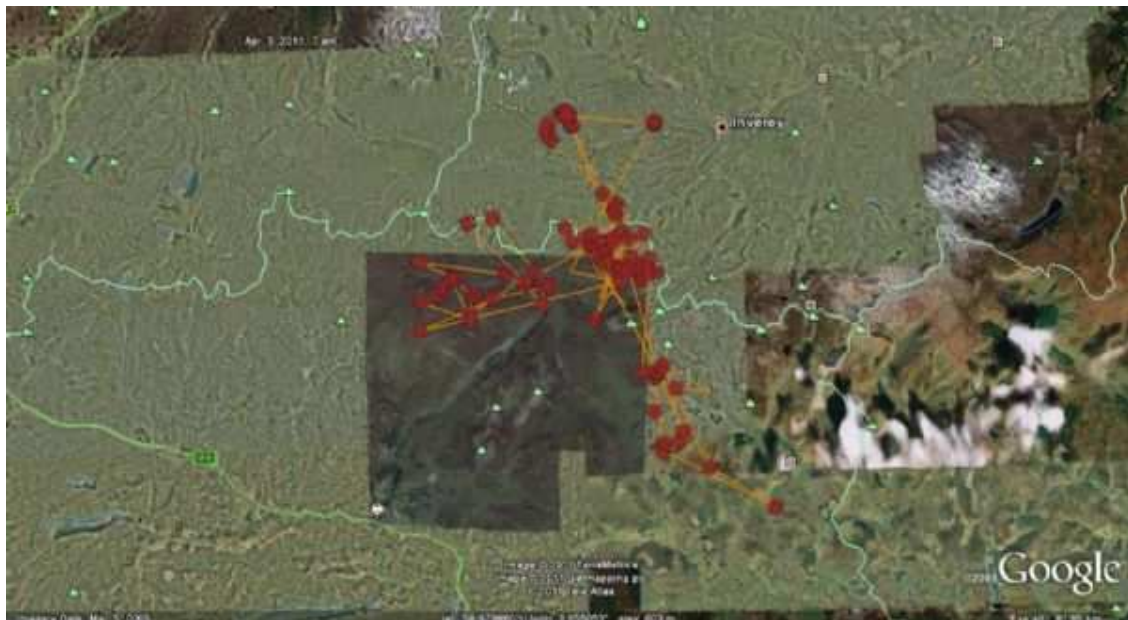
Visit to Pitfichie Forest

26 March 2011: West to north Perthshire

106 flew west on the 19th, and at 2pm was flying south over Geal Charn towards Ben Bynack and then down to Inverey on Mar estate. She then settled in the River Geldie catchment to the south of the Cairngorms, and also ranged into North Perthshire in the Loch Tilt area.

03 April 2011: Remained in same area

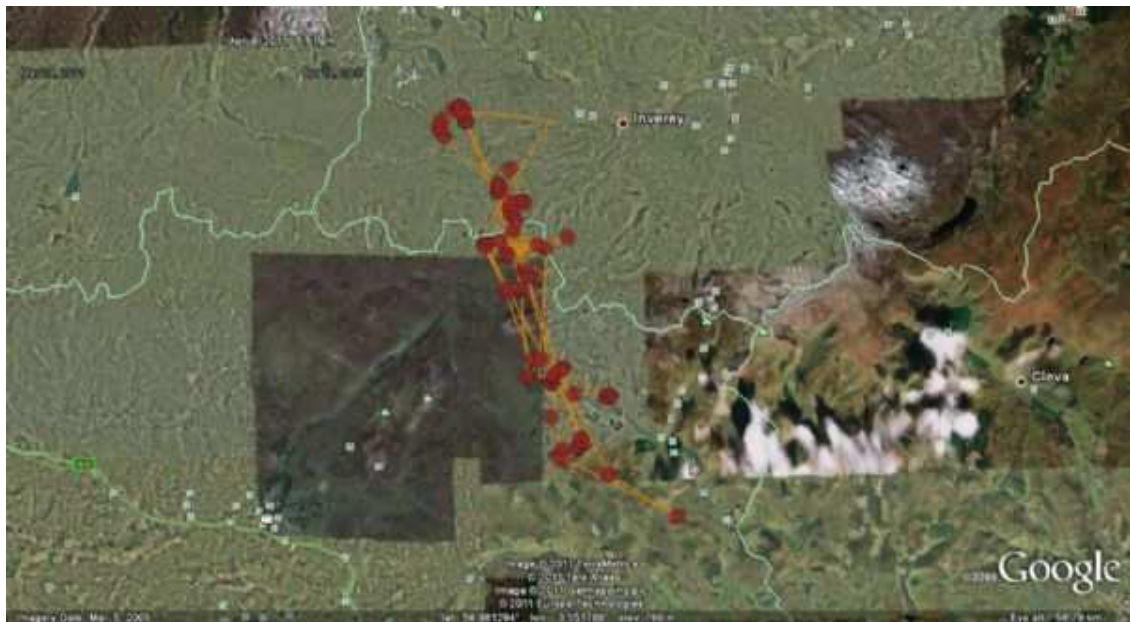
She remained in same area between west of Loch Loch in north Perthshire to the southern edge of Cairngorms, and south to Spittal of Glenshee where she was on 2nd and 3rd April. All within an area of 280 square km.



March 26th to 3rd April

10 April 2011: Remained in west Mar Estate

106 has remained in the western area of Mar Estate.



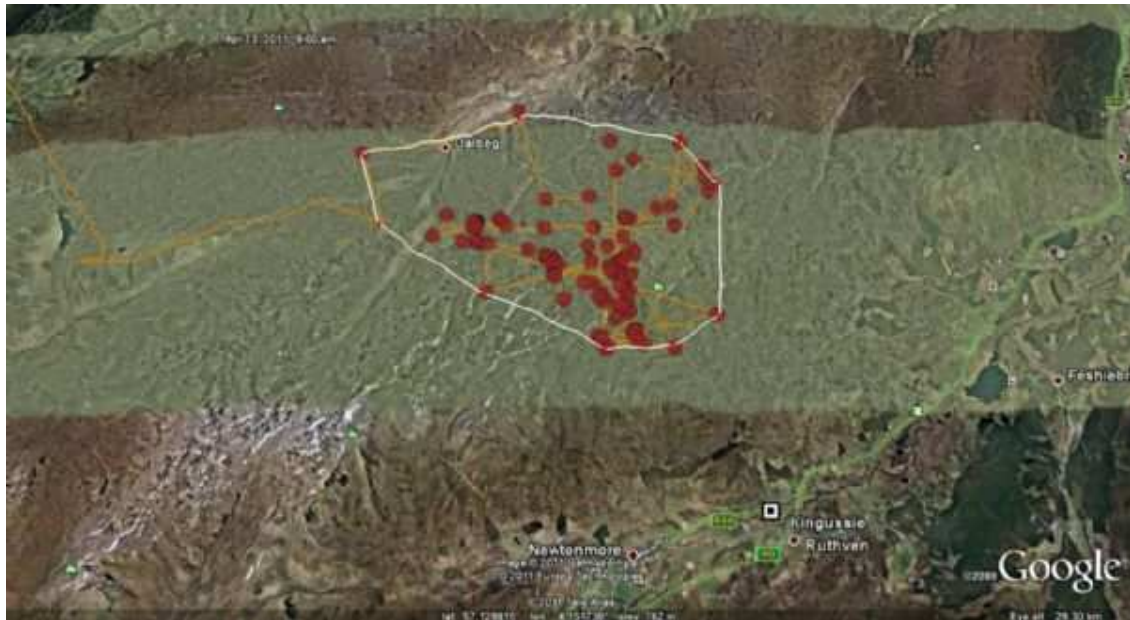
18 April 2011: Big flights

106 flew to the Monadhliaths on 8th, Achnasheen on 10th, Rhidorroch on 11th, south end of Loch Eriboll on 12th and then to Loch Choire to Borrobol on 12th to 13th. On 13th to 14th, flew to the area north of West Langwell, and then flew south and crossed the Dornoch Firth and 1pm on the 14th, 2 hours later near Wyvis Lodge and near Garve at 5pm. On 14th and 15th at Erchless west of Beauly, and then flew south to Coignafearn on 16th at 11am, and then to the Upper Dulnan river.



23 April 2011: Now in Monadhliaths

106 flew to Coignafearn on 16th and then into the central Monadhliaths, as far south as Pitmain Estate on 23rd, with a range of 76 km².



April 16th to 23rd

08 May 2011: In the Monadhliaths

106 remained in the northern Monadhliaths in an area of 55 km², around Coignafearn and Dunmaglass



May 2nd to 8th

12th May 2011: No change

106 remained in west Coignafearn May 4th to 12th, mainly in the valley of the River Cro. She had been seen a few days ago near Dalbeg but I did not see her while I was working at Coignafearn on 12th. The map shows the larger range of her brother (outlined in red) compared to her small range in white.



May 6th to 12th (106 range in white - 107 in red)

18 May 2011

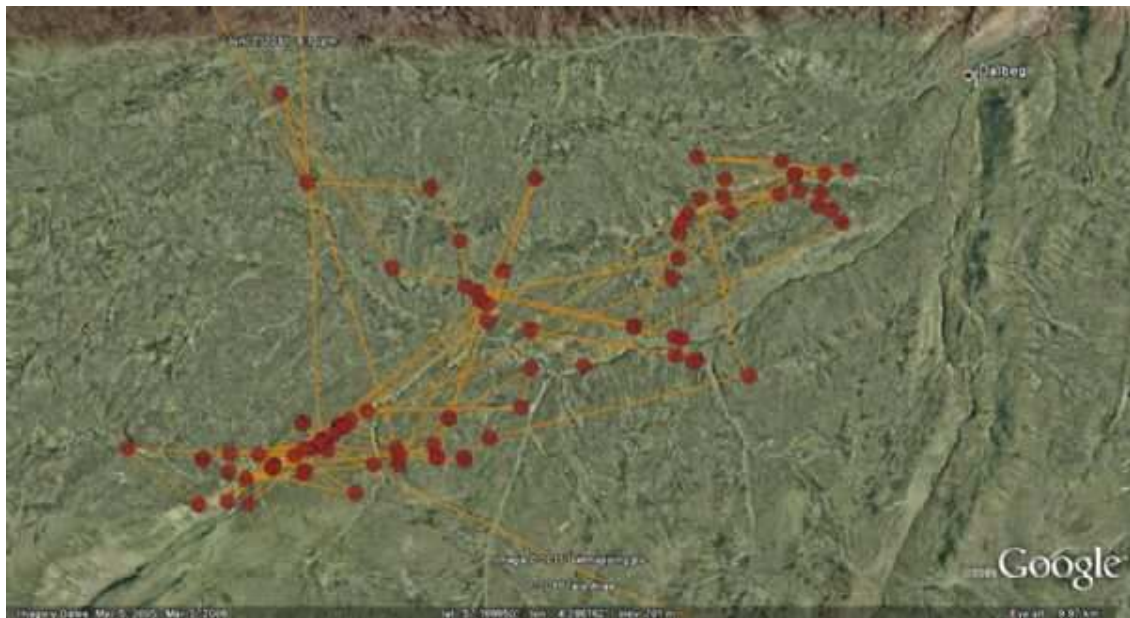
Remained in Coignfearn, west of Dalbeg, in a range of 33 square km.

29 May 2011

Ranging west of Dalbeg on Coignafearn Estate.

02 June 2011: No change

She has remained in the same area of the Monadhliaths. On 3rd June, while on a water vole survey I saw her briefly flying round a hill to the west of Dalbeg.



May 30th to June 2nd

25 June 2011

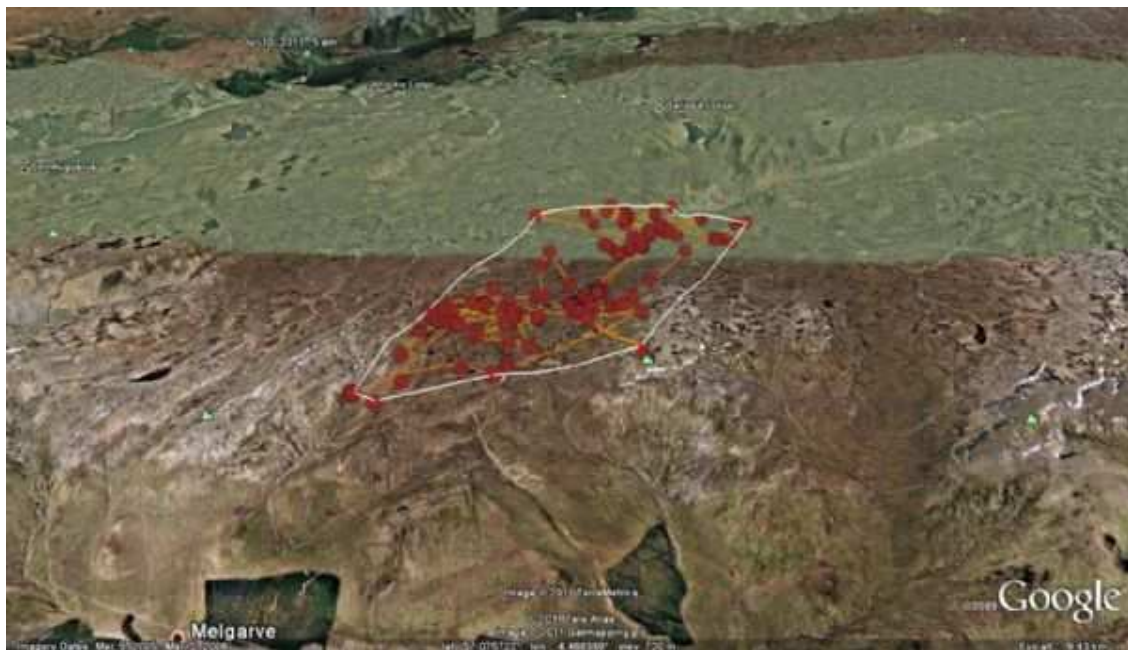
On the 20th headed west from Coignafearn to Loch Hourn and then north to Kintail and settled near Achnashellach through to 24th. Then flew back to the Monadhliaths and settled on Garrogie Estate.



June 21st to 26th

08 July 2011: No change

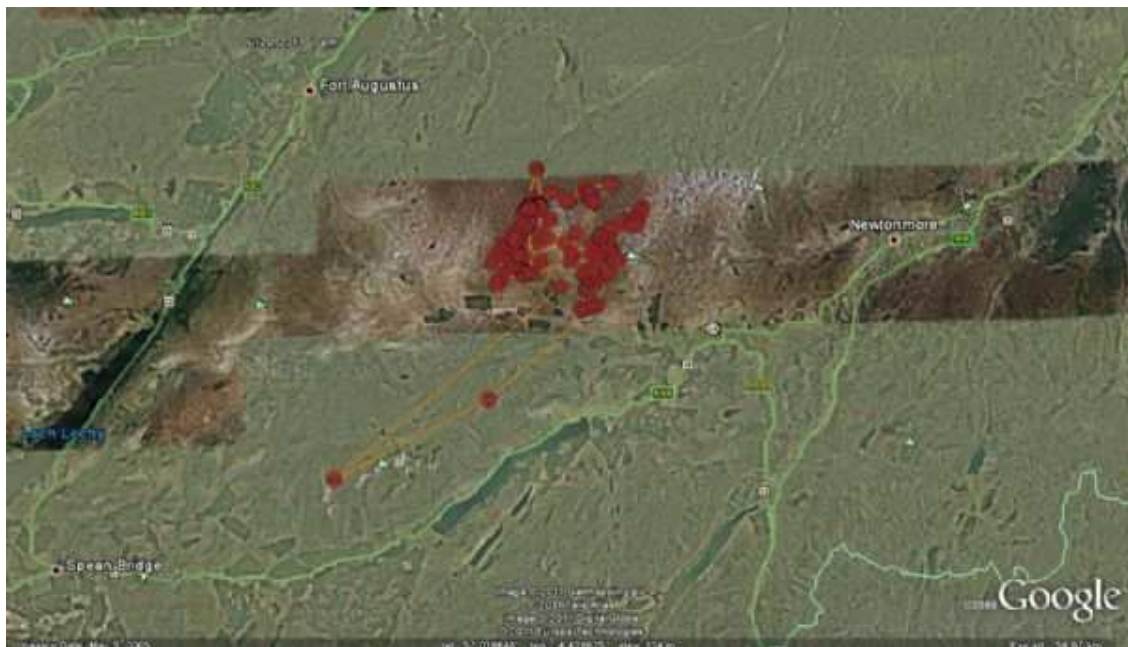
She continued to live in the west Monadhliaths, between Garrogie Estate and the upper Spey catchment, in a range of 20 square km.



June 28th to July 10th

22 July 2011: No change

106 remained in the same general area of the west Monadhliaths, except for a flight to Creag Meagaidh and back on afternoon of 18th July.



July 10th to 20th

02 August 2011: To Glenmarkie

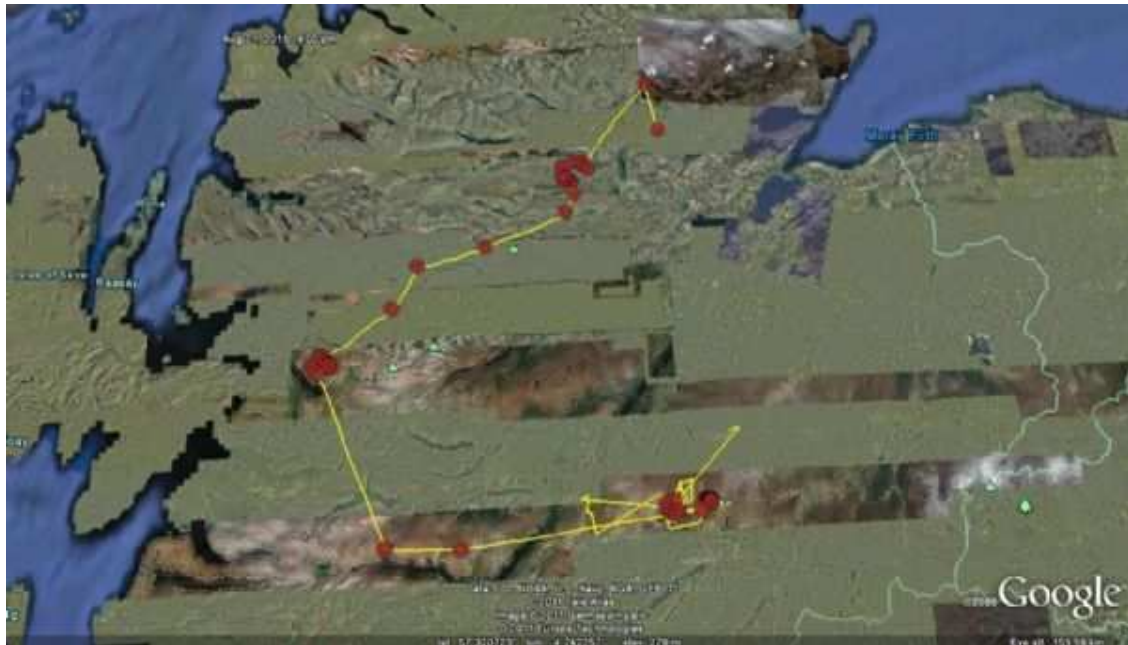
106 left the southwest Monadliaths on 30th July and flew northeast to Glenmarkie.

07 August 2011: No change

Ranging in Glen Markie and west Coignafearn.

22 August 2011: North to Ben Wyvis

106 left the Monadliaths at 3pm on 19th August, flew west to Loch Arkaig and then north of the mountains north of Loch Duich. On 20th headed to the hills north of Strathconon, via Loch Morar and Loch Orrin. Next day's journey was north to Loch Luichart and so to Wyvis Lodge by 4pm and then turned southeast to settle on the southeast foothills of Ben Wyvis, just 6km north of Dingwall.



August 16th to 21st

29 August 2011: Back to Monadliaths

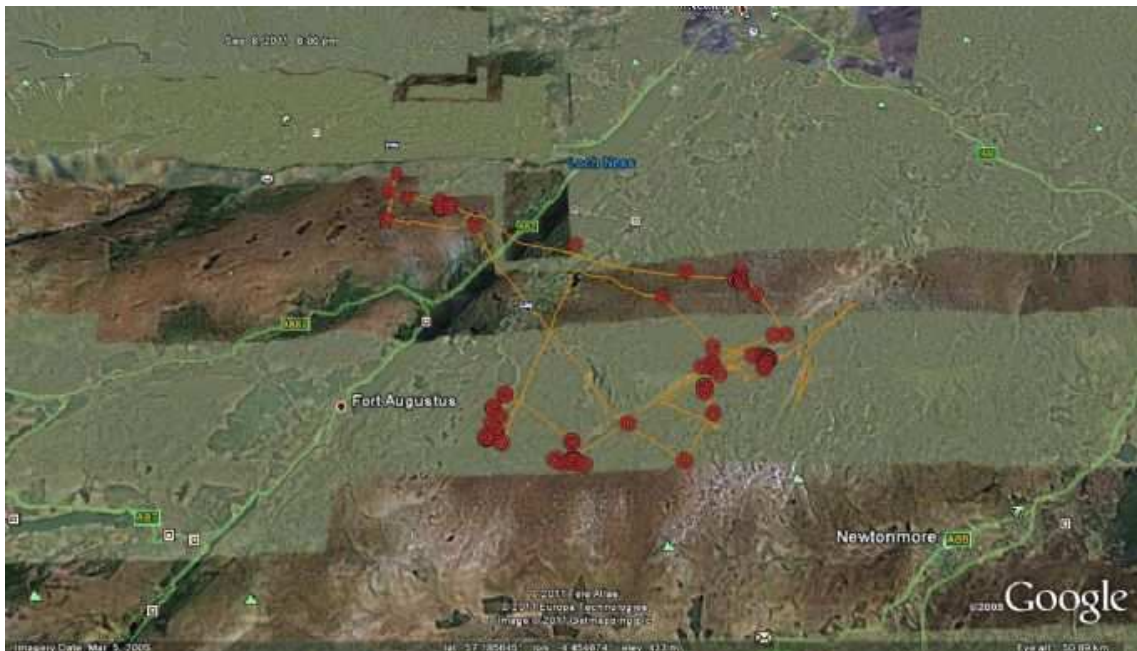
At 4pm on 22nd left Ben Wyvis southwest to the low hills south of Tarvie and then flew into Strathconon and the west end of Glen Orrin. On 24th to Loch Monar and by the evening south side of Loch Affric. On 25th flew east to Dundreggan, at 1pm on side of Loch Ness and by 2pm back in Coignafearn. Still there 7pm on 29th.



August 23rd to 29th

07 September 2011: Over and back over Loch Ness

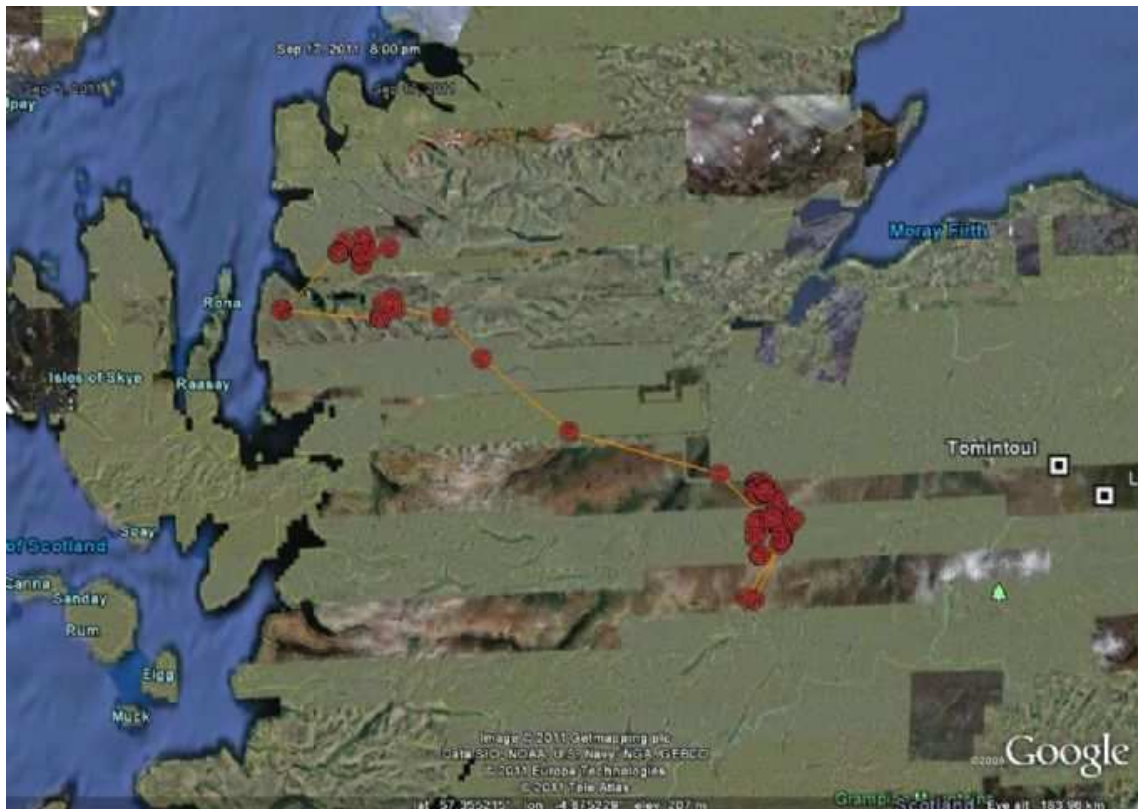
On 4th left the Monadhliaths and flew across Loch Ness to Balmacaan Estate. She then flew back over Loch Ness on 6th September to the same area.



August 30th-November 6th

17 September 2011: Off to Wester Ross

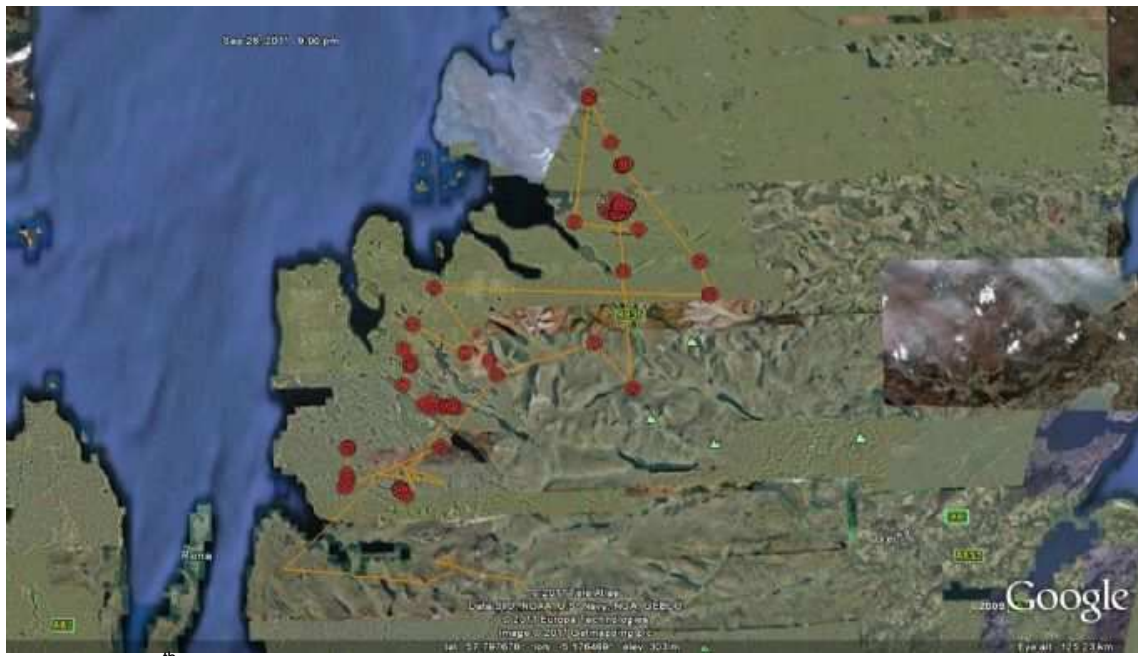
106 remained on the west end of Coignafearn Estate and over the northern march from 8th to 15 September, although she flew south-west to Glenshirra and back on the afternoon of the 13th. On the 15th she flew west over Loch Ness and kept going to reach Loch Monar at 2 PM and continued to the mountains south of the Torridon Road, Wester Ross. On the 16th she flew further west and was on the North Applecross peninsula at midday and 1 PM, before turning north to Baosbheinn, where she settled in the mountains between Torridon, Beinn Eighe and Talladale.



September 8th-17th

26 September 2011: In Wester Ross

106 wandered in Wester Ross between Loch Torridon and Rhidorroch, north of Ullapool. By 26th was back in the area north of Dalbeg.



September 19th-26th

30 September 2011: In Wester Ross

She was south-west of Loch Maree until the 29th, when at 7 AM she flew north and settled in the peninsula west of Loch Ewe. Still there at 1 PM on the 30th.

07 October 2011: Big flight NE to Helmsdale area

106 left the Gairloch area at 9am at 3 October; at 11 AM she was crossing Loch Assynt; when she was flying NNE at 127 km/hr at an altitude of 1086 metres (ground level 200 m). From 1 PM to 3 PM she was at Glen Golly and then at 5 PM she was approaching Ben Loyal. Two hours later she was roosting south of Borgie Forest after a day's flight of 126 km. On 4th at 9 AM she set off South and 11 AM was perched west of Achantoul Lodge. On the 7th she was on the Knockfin Heights and then flew south to the hills above Lothmore and stayed overnight in the glen above Culgower.



October 3rd-7th

20 October 2011: Flew to Ross-shire

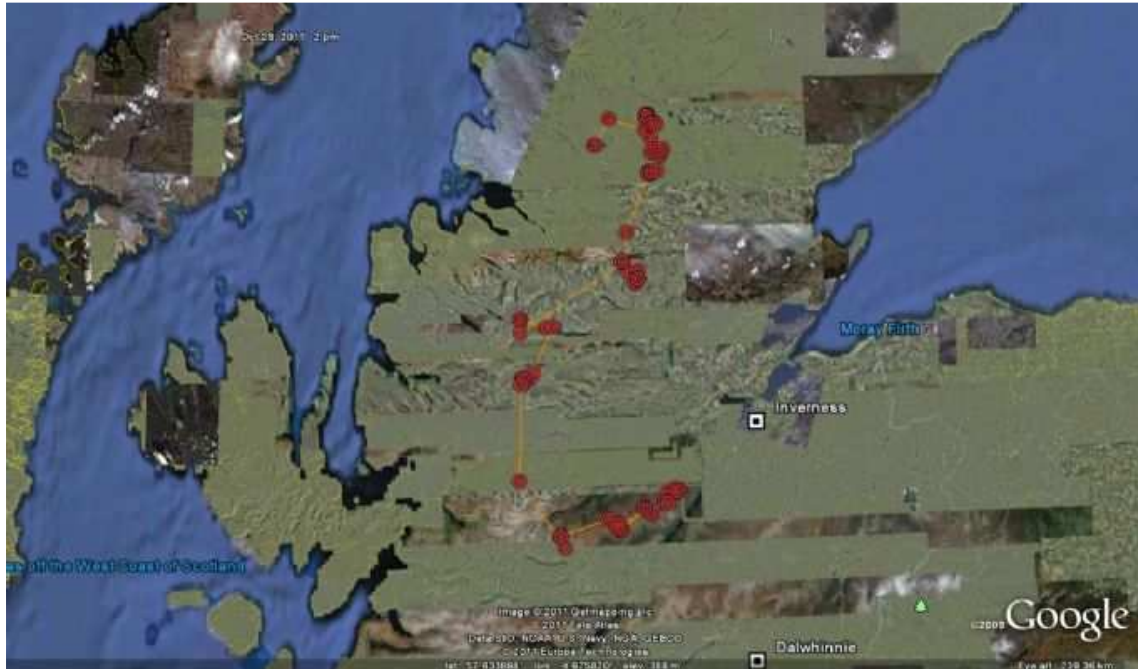
On 10th, 106 was still around Morven and then flew SW to Ben Lunndaidh, west of Golspie, on 11th. On 12th went to West Loch Shin and Glencassley. Then went as far west as Canisp in West Sutherland at 11am on 14th. Then flew south past Alladale to Strathvaich on 18th.



October 8th-19th

28 October 2011: South to Loch Ness

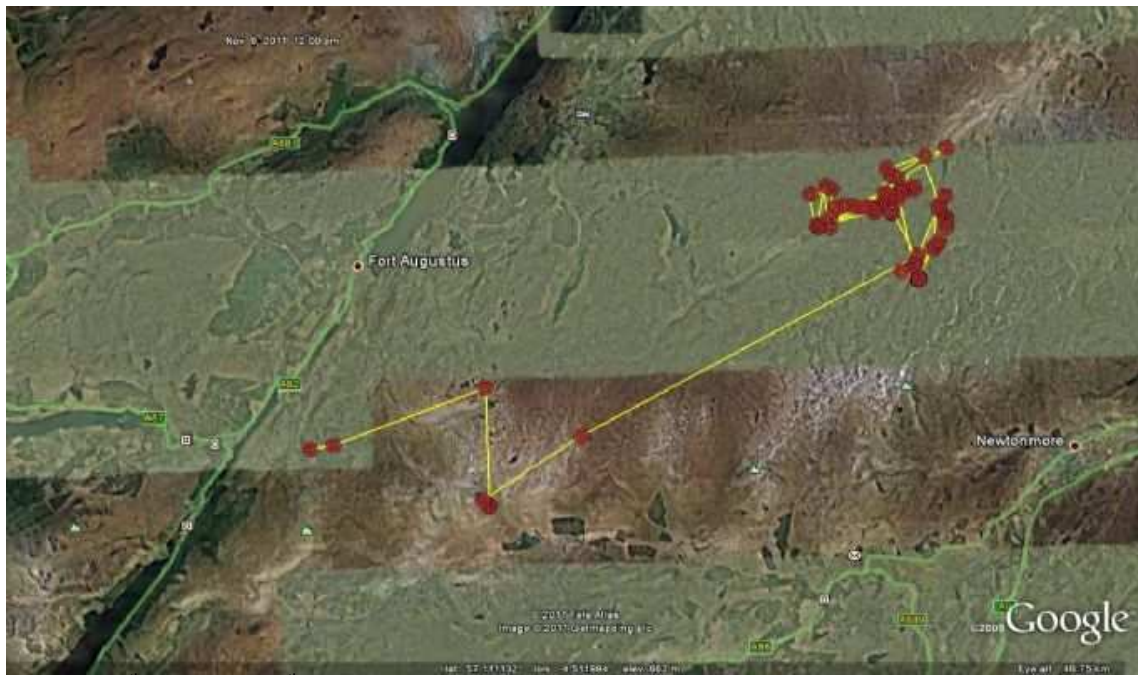
On afternoon of 21st she flew SW over the Fannichs and roosted that NE of Kinlochewe. Next week 196 flew S to an area SW of Achnasheen and on 23rd went to North Mullardoch, before moving east and south to Dundreggan and then on 25th to Balmacaan and still NW of Loch Ness at 3pm on 28th October.



October 20th-28th

12 November 2011: Back to the Monadhliaths

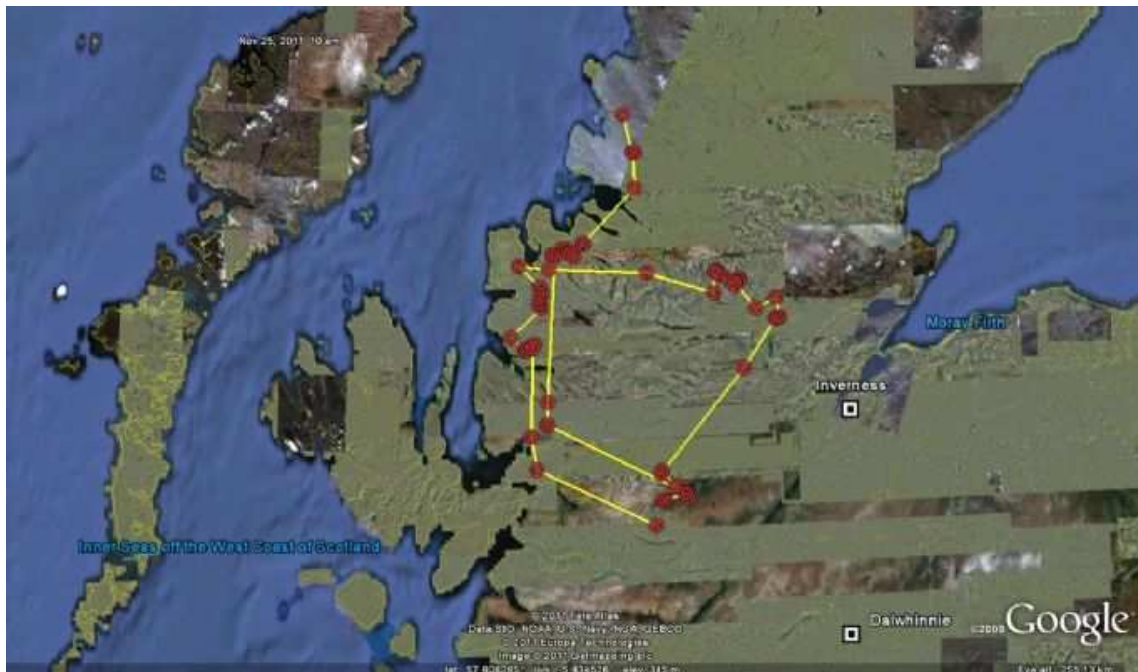
106 flew back to Coignafearn in the Monadhliaths and was there until 8th. On the nights of 3rd, 4th and 5th November she roosted on an eagle nest I built some years ago in a small cliff. By 2pm on 8th she was in the Corriearieck and then moved to the hills south of Aberchalder.



October 30th-November 9th

27 November 2011: Back to NW Sutherland via Easter Ross

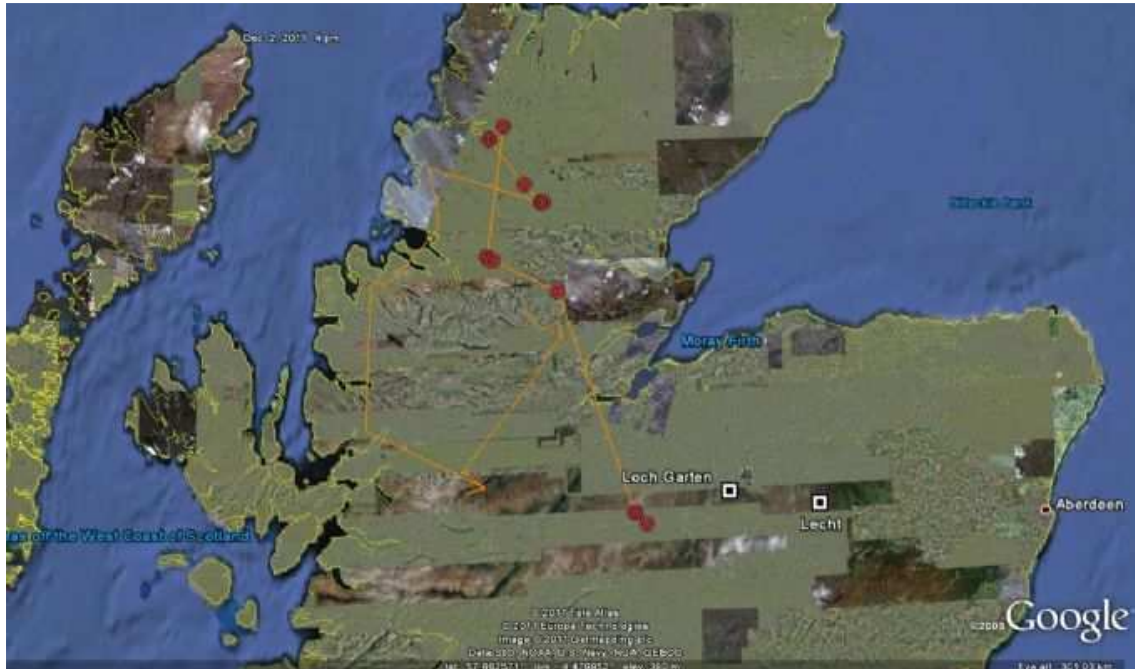
106 flew on 10th November to the north side of Loch Torridon and then on 12th to Loch Ewe, and then east to the north side of Loch Glascarnoch. On 13th and 14th she was around Ben Wyvis including the SE slopes before flying SW on 15th to Loch Mullardoch. On 16th to 19th she was in Glen Affric and then on 20th she flew NW to Fionn Loch. On 23rd she was in Coigach and Inverpolly area and at 10am on 25th was close to Inverkirkaig flying NE at 99km/hr.



November 10th-25th

05 December 2011: NW Sutherland to Monadhliaths

106 was at Kylesku area on 27th and 28th November, then to east Rhiddoroch and then by 4pm on 29th at Kildermorie. On 2nd December she was in Coignafearn roosting on an artificial eyrie at 4am and 4pm, and at 10am in upper Dulnan River.



November 26th-December 2nd

14 December 2011: Remained Coignafearn

106 remained in the Monadhliaths mainly on Coignafearn.

26 December 2011: Moved to Loch Killin

Moved to Loch Killin area.

29 December 2011: No change

No GPS locations, but at 6.50am on 27th December was south of Loch Mhor near Whitebridge.