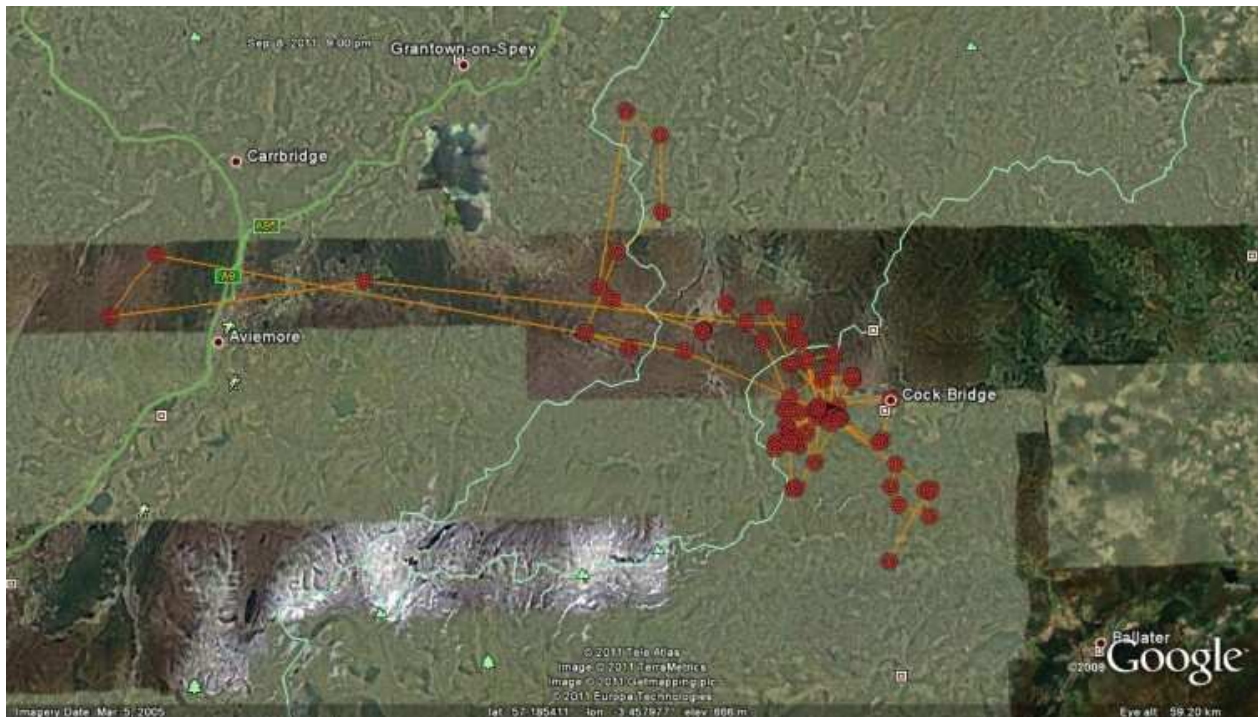


Movements of Aspen in 2011

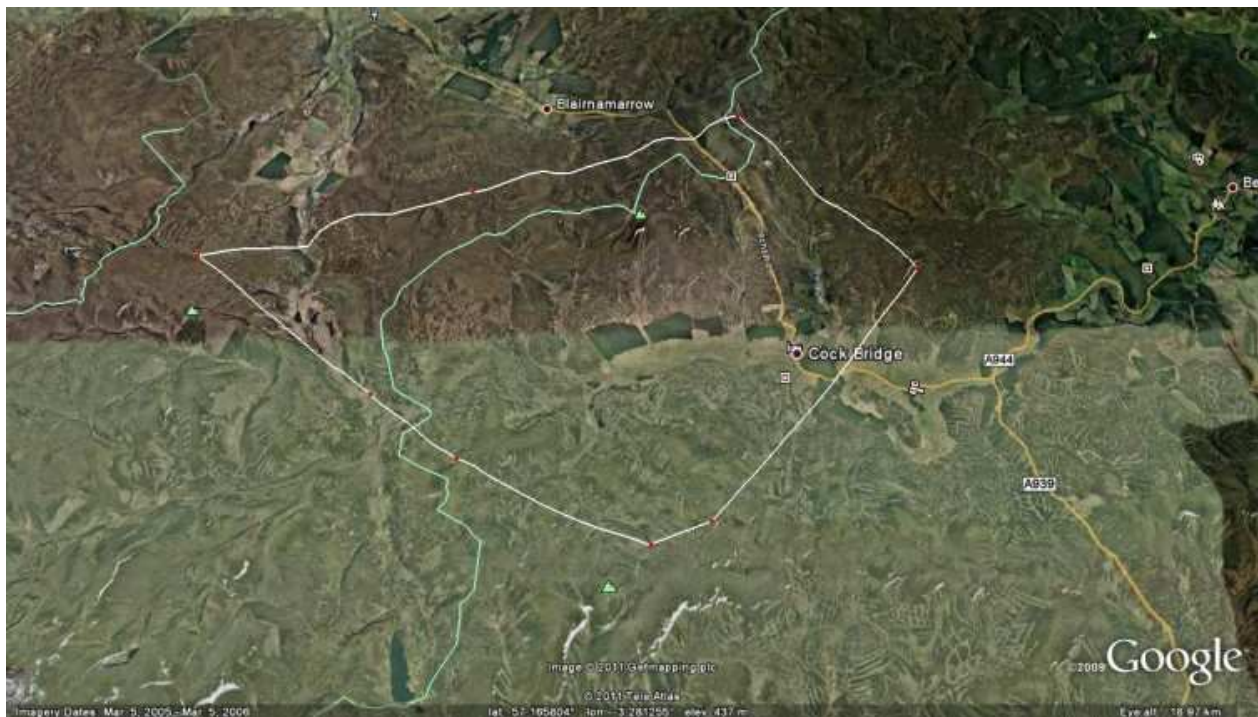
09 September 2011: Ranging widely

Mainly living west of Cockbridge but ranging widely in an area of 500 square km. On 27th August flew to the Cromdale Hills and back and on 4th September flew to the hills to the north of Aviemore and back.



17 September 2011: Ranging in same areas

Aspen has been ranging in an area of 105 square kms from north of Brown Cow hill to Inchroy, the north side of the Lecht and in the hills north east of Cockbridge.



06 October 2011: Not sure what is happening

I sent the last series of messages from the transmitter to the manufacturer in the United States but his conclusion was that the transmitter was working properly up to 17 September. No more locations were received until a poor quality one on September 29th near Marywell on South Deeside and then an accurate non-GPS signal in Glen Muick on 1 October.

15 November 2011: Gone missing

No news of Aspen since the last signals – gone missing