

Movements of Freya in 2010

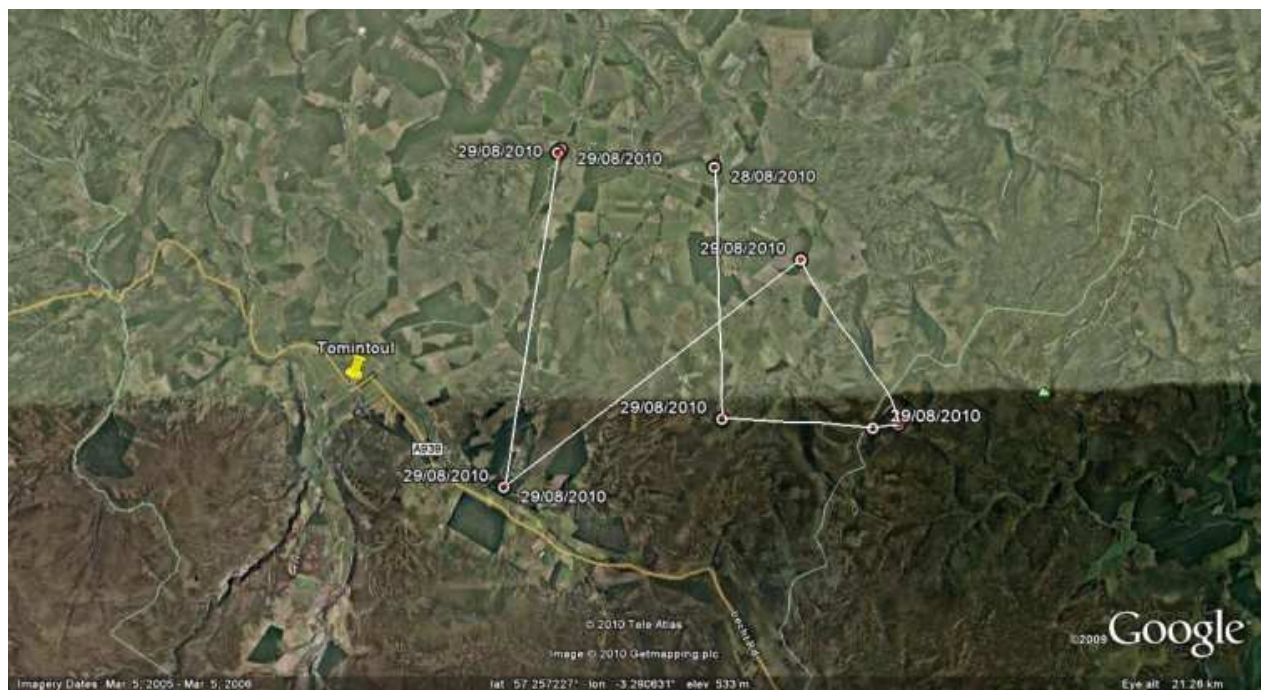
27 August 2010: Freya leaves home

Freya left home today and flew to the east near Tomintoul. She was still at the nest at 7 AM but by 1 PM was to the east of Tomintoul travelling over the Glenlivet Estate. By evening she had chosen a conifer plantation in which to roost for the night and her flights during the day covered at least 44 km.



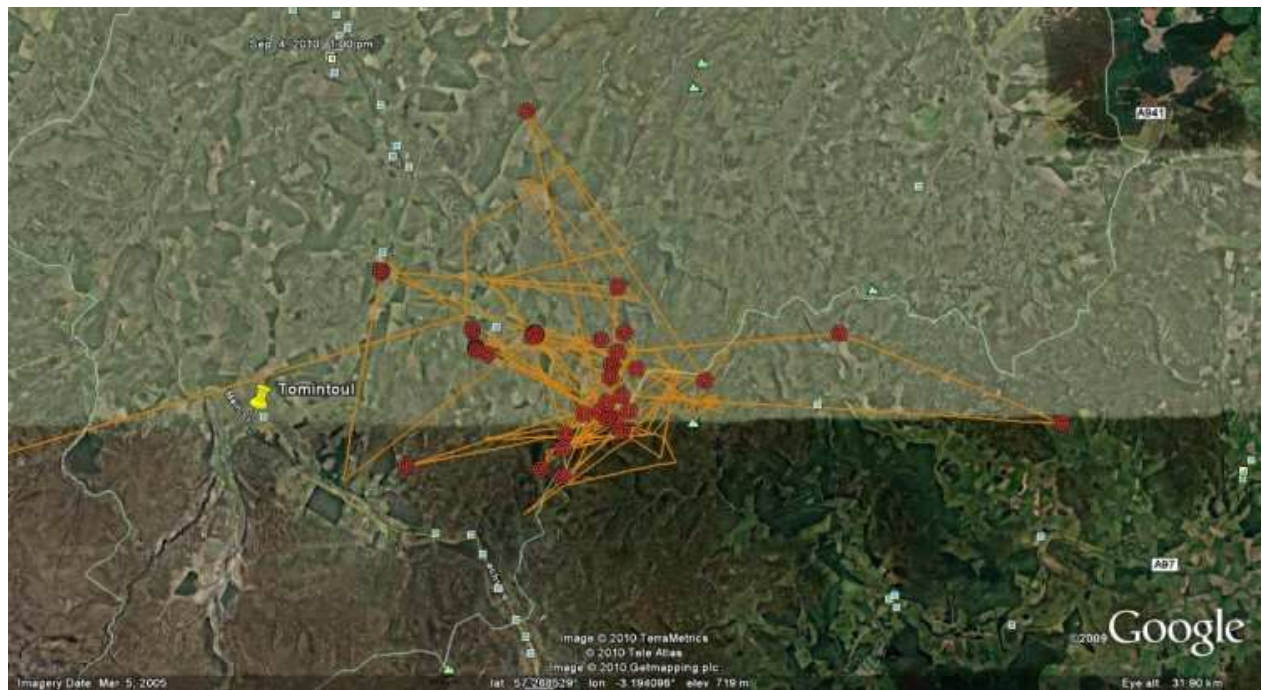
29 August 2010: Ranging widely on Glenlivet

Freya spent the day ranging widely on Glenlivet Estate.



04 September 2010: Settling in

Freya has spent all her time in the same general area.



08 September 2010: Freya's nighttime roosts

Freya's recent night-time roosts are plotted in the following map. She roosted in forestry plantations on 6 nights, 2 of them at the same roost site, and roosted 3 nights in the high hills, where she presumably roosted on a rock or outcrop. It's fascinating to see how she starts to build up a network of roosting sites within her range.



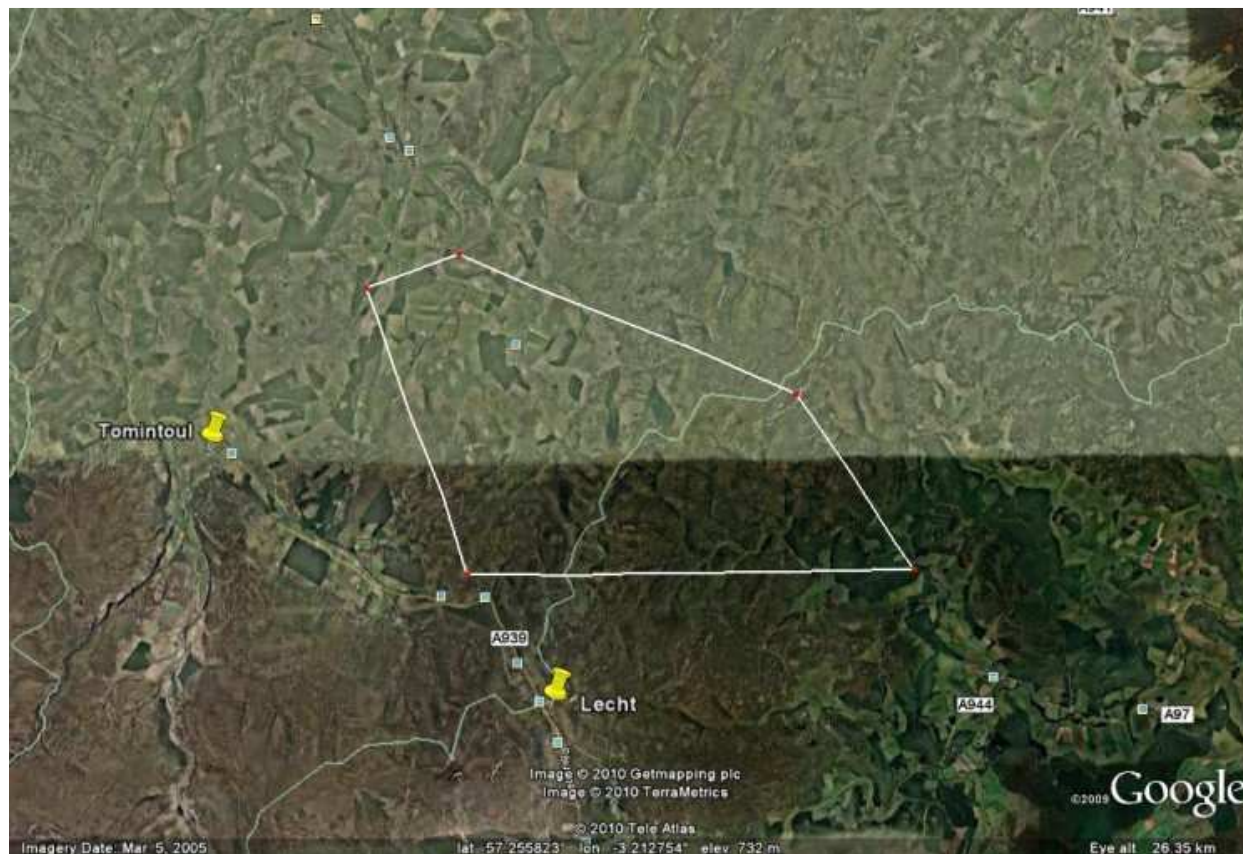
11 September 2010: Big flight to Deeside and back

Freya was roosting last night in a forestry plantation on the Strathdon side of the Ladder Hills. In the early morning she flew off south and crossed the River Dee western part of Glentarnar Estate; she then turned west passing over at Balmoral before heading north to Gairnshiel bridge. She spent some time on the moorlands to the north before heading back over the watershed of the Ladder Hills to roost in woodlands on Glenlivet Estate. She covered at least 66 km during the day and certainly learnt some new ground.



16 September 2010: Spent more time on Glenlivet Estate

The latest data shows that Freya was slightly more often on the Glenlivet side of the Ladder Hills in the last four days.



20 September 2010: Mainly in Donside

Freya has changed in the last 4 days to spending more time on the southern side of the Ladder Hills, mainly roosting at night in the lower woodlands and then ranging up on the high ground during the day.



24 September 2010: No change

Freya continued living in the same general area of 108 sq km. On 22nd at 1pm she made a flight out towards Cook's Cairn, Glenfiddich at the proposed site of a windfarm and on 23rd at 2pm she was over Tomintoul.



28 September 2010: Living locally

Freya has remained in much the same area in the last four days, roosting in Forestry Commission woodlands on the low ground of Strathdon and flying in the glen and up onto the Ladder Hills. An RSPB guy told me he saw a young peregrine hunting over farm fields near the roosting area the other day, so the chances of seeing the tracked peregrines looks good. It will be great if anyone can get a photo for this web log.



04 October 2010: Longer flight and back

Freya was continuing her usual routine, from 30th September to 3rd October, of roosting in Forestry Commission woods north of Strathdon and flying up onto the moors during the day. On the 4th she had a much more adventurous day, by 11am she was 16 kms SW on moorlands of SW Delnadamp Estate; two hours later she was just west of the Lecht Ski area, and back in the usual woods at 3pm. She then flew north and was on the high parts of the Ladder Hills at 5pm, halfway back by 7pm and at a usual tree roost at 9pm, after well over 50 kms during the day.



10 October 2010: Visits Glenfiddich Estate

Freya continuing to use same area of Strathdon, ranging on 6th October south of Corgarff at 1pm; and on south side of Cabrach/Glenfiddich at 1pm on 7th and at 1pm on 9th was NE of the Kymah Burn towards Cooks Cairn. Some mornings she had left the woodland roost to be on the high ground of the Ladder Hills before 7am.



14 October 2010: Same daily routine

Freya has continued living overnight in woodlands in Strathdon and then flying out during the day to hunt over farmlands and up onto the hills as far as Glenlivet Estate on the other side of the Aberdeenshire/Moray border. She has been in a range of 27 square km.

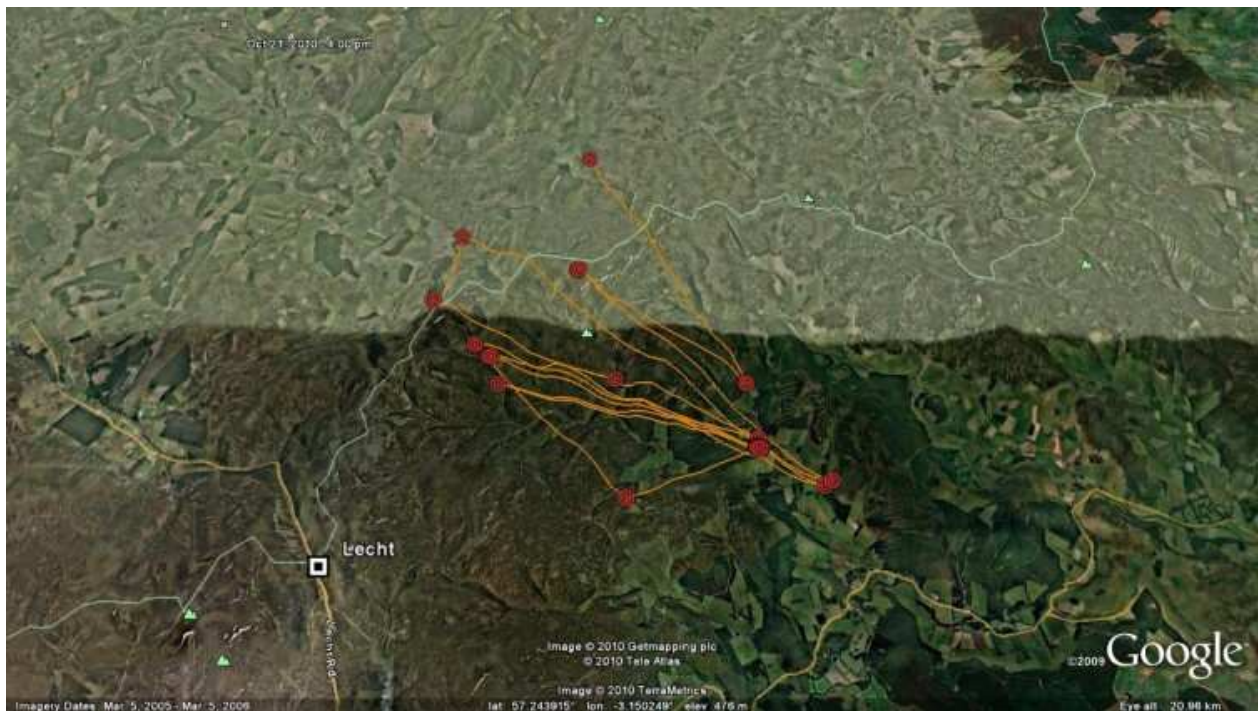


17 October 2010: No good fix

Just one transmission signal for early today but it contained no useful location data.

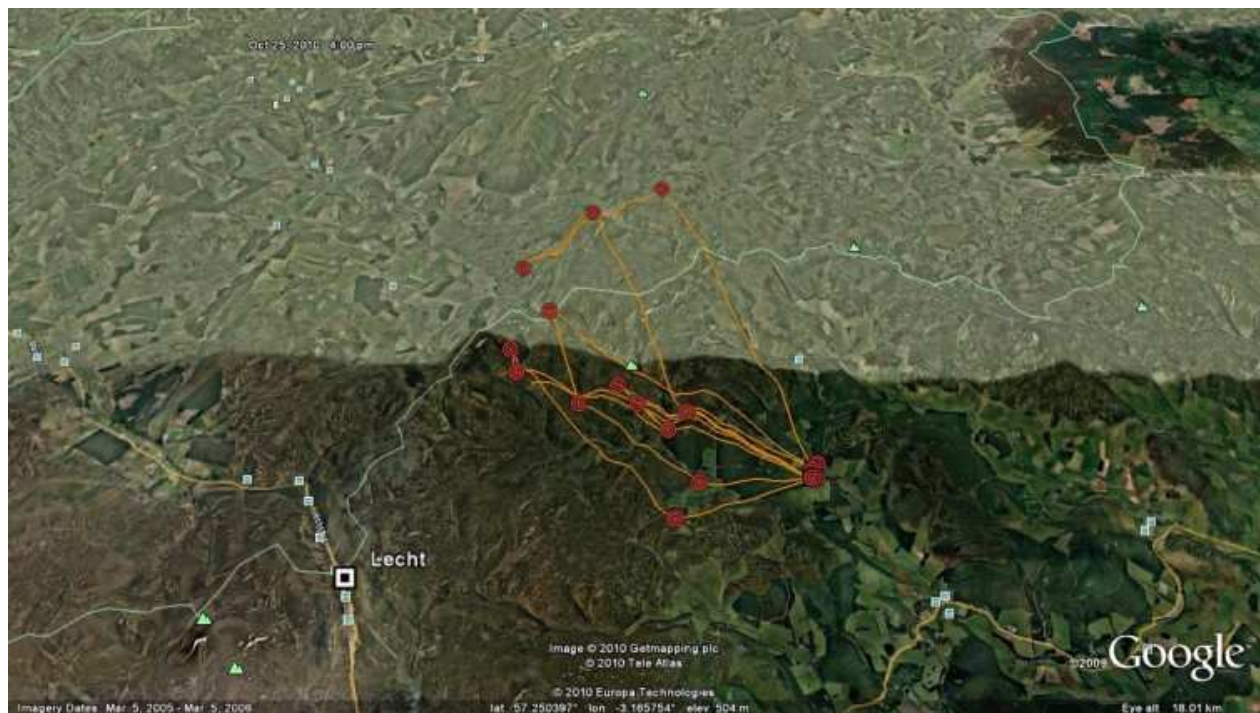
21 October 2010: No change despite winter weather

Freya continued to roost in forestry plantations and fly up on the Ladder Hills during the day. On 19th and 20th October the weather was cold, wintry with strong winds, and the first poor road conditions due to snow on the Cockbridge to Tomintoul road.



25 October 2010: No change

Freya continues to use the Strathdon to Ladder Hills area.

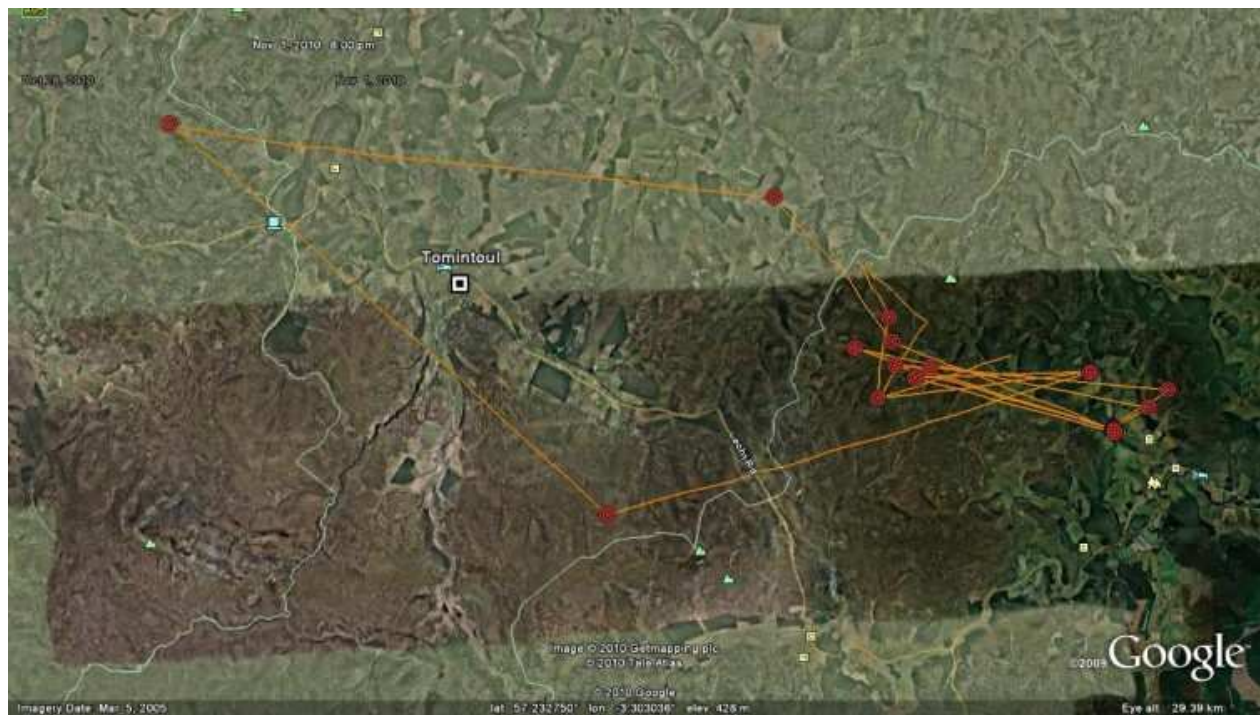


29 October 2010: Usual routine

No change in daily routines.

01 November 2010: Longer trip to the Cromdale Hills

Freya has been carrying out her usual routine from the woods in Strathdon to the Ladder Hills, but today she made a much longer flight – it was a beautiful sunny day for a change. At 10am she was perched or over the conifer plantation, which she used previously for night roosting, near Chapelton in Glen Livet. By midday she was at Carn Tuarneir in the Cromdale Hills, 15.5 km to the west, she then flew back 15 km to the hills to the west of Lecht road. Flying over the Lecht road she returned to the woods in Strathdon.



07 November 2010: Visited the Cabrach

On 3rd November she visited the west end of the Ladder Hills, and then on 5th November she flew 9km towards The Cabrach by midday and then went further to near the Lang Hillock by 2pm, before flying back 11km to Strathdon.



10 November 2010: No change

Freya continued her normal behaviour.



21 November 2010: No change

A small amount of data on 15th showed she was still in Strathdon but the dark days of November can be a problem as very little sun hits the solar array on the transmitter, so information is scarce.

23 November 2010: Gone to lower ground

A class 2 signal came in for half hour after midday today and showed that Freya was lower down in Deeside just north of Kincardine O'Neil, between Aboyne and Banchory. I do not know if she was on a daytrip (she was 28 km SE of her normal roost area in Strathdon) or has she moved to lower ground? The poor weather and general November gloom means the transmitter battery is not charging up well from the solar panel. Or maybe she knows that heavy snow is forecast.



25 November 2010: Back in Strathdon

A couple of non GPS locations came in for her normal area in Strathdon.

27 November 2010

Three good GPS locations at 6pm on 24th, 25th and 26th November were for her roost locations in forestry plantations north of Strathdon. I wonder if the deep snow will change her habits.

09 December 2010: Moved to Deeside

After a period of no signals (presumably the solar panel failing to get enough sun) Freya's transmitter burst back into life today. She was east of Gairnshiel at 2pm on 7th and flew north to roost overnight at Cockbridge, next morning at 10am she was back at Gairnshiel and at 2pm had moved down the valley to be just north of Bridge of Gairn. By 6pm she was roosting in the wood north of the Deeside road at Coilacreich. Next morning, at 10am she was on Balmoral Estate, at Aucholzie south of Birkhall, then back to Coilacreich at 2pm and then moved west and at 5.15pm was in trees at edge of farm fields west of Crathie. Good to get her back giving information on her movements – I was worried.



21 December 2010: Back in Strathdon

Many signals of poor quality as daylight is so poor in December that the solar panel does not charge the battery to get GPS, but we have now passed the shortest day so things will slowly get better. GPS signals on 18th at 2pm and non GPS on 21st at 10am show her back in usual haunts in Strathdon; the latter probably hunting over farmland.

