

# Spey's Movements in 2011

## 04 January 2011: Has he settled down?

Spey has spent a week now on the north shore of the estuary, along 9 kms of the coast.



January 2<sup>nd</sup>-4<sup>th</sup>

## 11 January 2011: Moved a little west

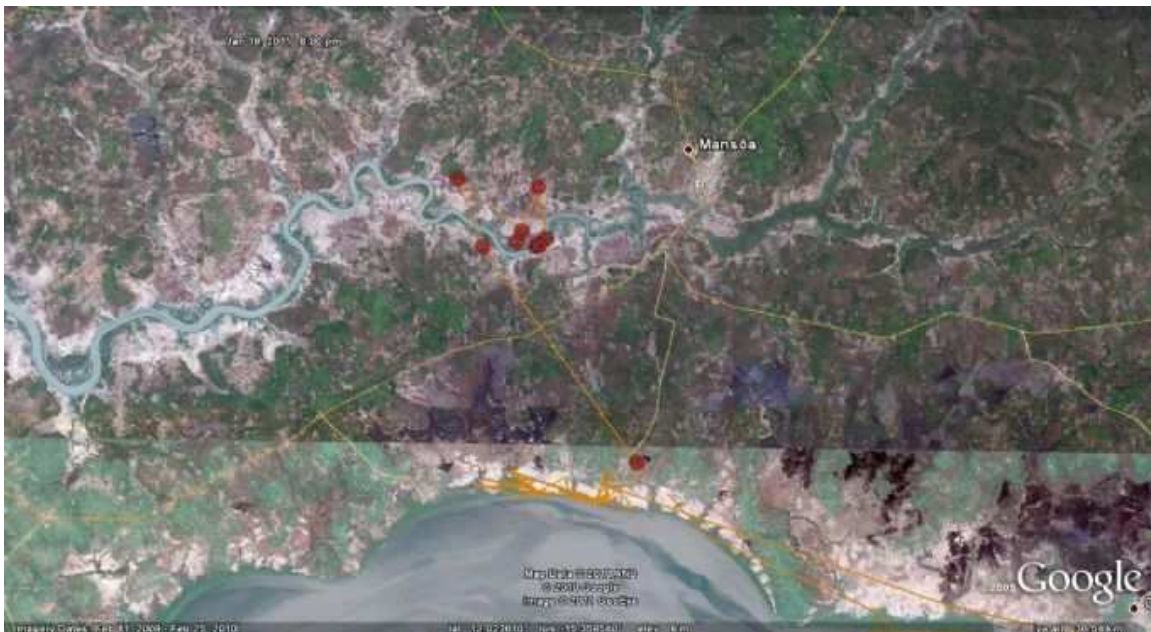
On 6th January, he moved about 15 kms west of Colicunda, along the north bank of the estuary, where he has now settled in an area of 13 square kms.



6<sup>th</sup>-11<sup>th</sup> January

### 21 January 2011: Another short move

Spey left his wintering location on the north shore of the estuary on 19th January and flew NW to the River Mansoa, downstream from the village of Mansoa. He is living on the north shore of the river, where most of the mangrove swamp has been converted to irrigated fields, probably for rice cultivation.



Change of location on 19<sup>th</sup> January



Locations on River Mansoa

### **28 January 2011: Back to the big estuary**

Spey flew back south to the big estuary on afternoon of 25th, and then by 1300GMT on 26th was back in the area just west of Collicouda on the north shore of the estuary - in last ten days he has been in an area of 370 square kms.

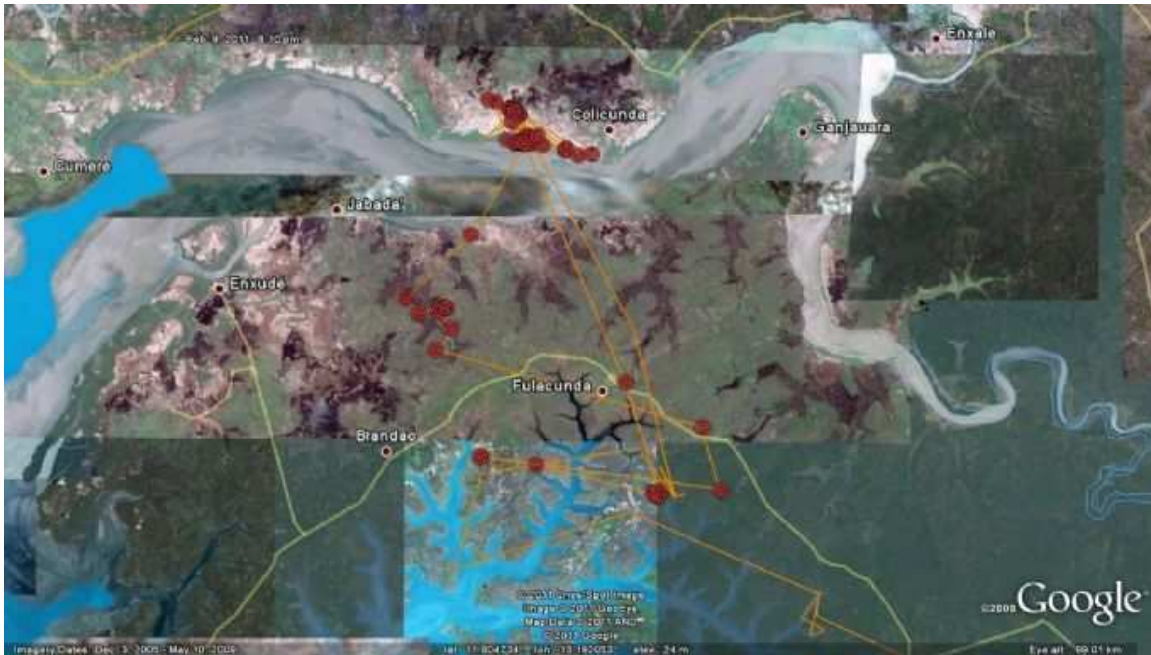




21<sup>st</sup>-27<sup>th</sup> January

### 11 February 2011: Moving again

Spey was living in the marshes west of Colicunda in early February, then on 7th he went south to Fulacunda and a series of mangrove swamps; on 8th he flew north to mangroves south of Jabada and then during afternoon of 9th he returned to Colicunda. The area he covered extended to 350 square kms, so he is still exploring for the best wintering areas.



February 1<sup>st</sup>-10<sup>th</sup>

### 17 February 2011: Southwards again

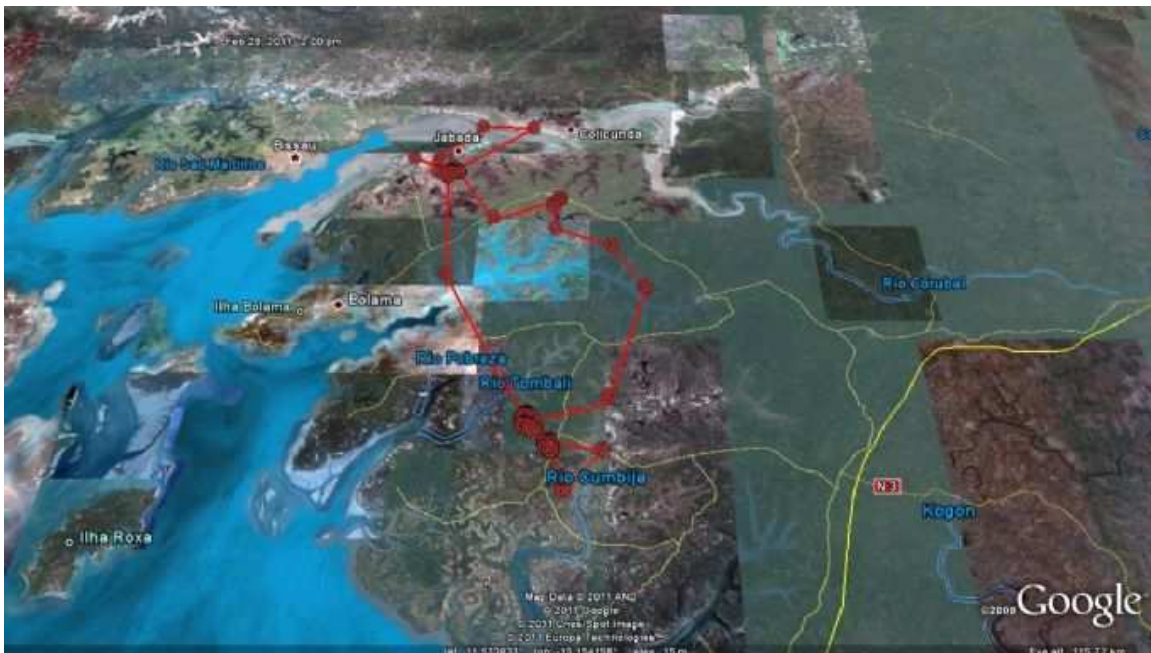
Rothiemurchus flew south again on 12th February to the mangrove swamps south of Fulacunda; on 14th he went further SE and then on 15th SW to the south of the River Tombali - this is 60kms south of Colicunda. Next day he flew NW to the River Pobreza.



February 12<sup>th</sup>-16<sup>th</sup>

## 28 February 2011: Living in large area

Spey has been moving about in the Guinea Bissau estuaries and rivers within a range of 1500 square kms, and at the end of the month was at the southern end near Rio Cumbija.





February 21<sup>st</sup>-28<sup>th</sup>

### 13 March 2011: Little more settled

The last ten days has seen Spey in the River Tombali area within a range of 50 square kms. Has he at last found a favoured haunt?



Range March 3<sup>rd</sup> – 13<sup>th</sup>

### 20 March 2011

He remains in Tombali and Pobreza rivers region, in an area of 60 square kms. He'll notice in the next two weeks that adult osprey competition disappears on spring migration, and more choice fishing sites are left undefended.

### 27 March 2011: No change

At 1000GMT this morning Spey was in his favourite site on the Rio Tombali and in recent days he has been more settled. On 22nd he flew 23 kms SW and back, and yesterday 13kms and back.



March 20<sup>th</sup>-27<sup>th</sup>

**03 April 2011: Same area**

Much the same area around the Ri Tombal, although today (3rd) was 24 kms to the east.





## 10 April 2011: Same area

Spey has been ranging within 640 square kms in the southern half of Guinea Bissau.



## 19 April 2011

Spey has been mainly in an area near the Guinea border, north of Quebo, in an area of tidal creeks, but in the last day has flown a little to the north-west.



### **25 April 2011: Looking settled on the Guinea border**

Spey looks as though he has decided to settle down in the wetlands in Guinea Bissau, close to Guinea.

### **20 June 2011: Very settled in same area**

Spey has settled down and remained in the same Quebo area of Guinea Bissau for the last two months. Once the adults have gone north the young birds can settle down in a favoured haunt.



June 10<sup>th</sup>-20<sup>th</sup>

### **08 July 2011: Uncertain of Spey**

Since 20th June, we have only received non GPS data and we're not sure if he has had a problem or whether his transmitter is only sending out non GPS data from the same area NE of Quebo.

### **21 July 2011: No definite news**

Still some signals getting through but not GPS - it's looking like something has happened to the transmitter or to Spey, but it's still in the same area.

### **No news**

No signals coming in so I'm afraid something has happened. Possibly a problem with the transmitter – I hope so.