

Movements of Tanar 2010-2011

11 July 2010: Now flying

Colin McLean saw young flying near the nest site.

19 July 2010: First steps away from natal area

Remained within an area of 10.5 square kms in Glentanar, but on 19th July flew 13 kms south to Loch Lee and back, and then 5 kms north over the Dee and back.



First flights away and back 14th - 19th July

27 July 2010: Exploring

Most of the period on Glentanar but on 27th July had a busy morning flying at least 53 kms; roosted overnight south of Forest of Birse, then flew east to Craig Vallich above Ballater; next flew north over the River Dee to Crannach Hill, and back to Glentanar, then south to Mount Keen, east to Gannoch at 09.07am and so back to breeding area.

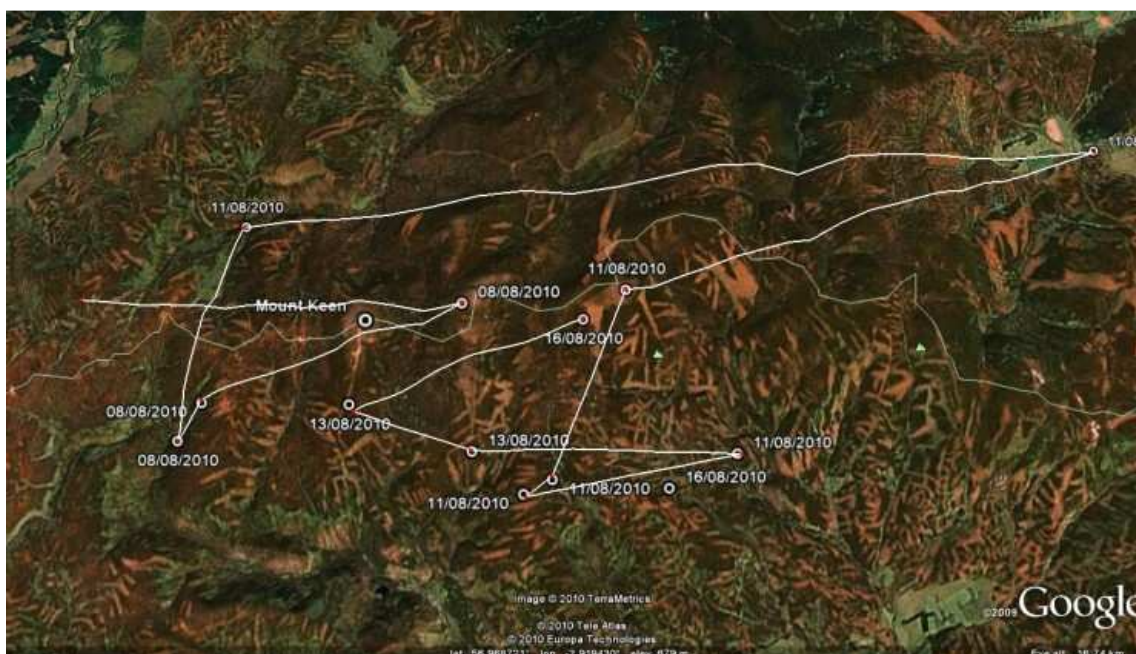
06 August 2010: Moving into new areas

She was on main hills of Glentanar and was 7 km east on 1st August; on 6th moved SW onto the moors on the eastern slopes above Loch Muick before flying further to the head of Glen Doll and so east to The Witter.



16 August 2010: Moving over the county border

On the 8th she was on Mount Keen, then had moved to Cairnhillock and Birse on 11th, back to Hill of Gairney and rest of time on southern slopes of the watershed.



Locations 8th to 16th August

26 August 2010: Still in same area

Tanar has been ranging in an area of 35 square kilometres of moorland, mainly on the northern slopes of Angus.



Locations 18th to 26th August

07 September 2010: Aberdeenshire side of the county boundary

Mainly on the Glentantar moors running up to Mount Keen; on the 7th had moved east to the south side of the Braid of Gairn.



16 September 2010: In the north Angus hills

Tanar spent her time within a range of 58 square kilometres from Mount Keen south to Tarfside and Milden estate in Glen Esk.



Range 9th to 16th September

29 September 2010: Not much change

On the 24th at 6:25 a.m. she was near the Clash of Wirren on the south side of Glen Esk, while on the 26th at 6:45 am she was briefly on the Glentinar side of the hills, otherwise she has been mainly to the north-east of Invermark in Glen Esk, Angus.



01 October 2010: Usual routine

In the last few days she has been between Invermark and Milden, while she roosted last night further up the glen towards Glen Doll. Later in the day she was some 4.9 kilometres away, flying over the south-eastern slopes of Mount Keen. After a beautiful sunny day yesterday she is back hunting in heavy rain and strong south-easterly winds.



Night roost and midday locations

03 October 2010: Moving about

There were three afternoon – evening locations of Class 1 accuracy today, plus other less accurate ones. She moved 9 km west and then apparently 20 km east to reach her most eastern roosting area.



04 October 2010: Off to Glen Dye

On 1st October, Tanar moved from Invermark to the southern slopes of Mount Keen; there were no locations on 2nd (due to bad weather failing to charge the battery) and then on the 3rd, she ranged widely and by dark was in the headwaters of Glen Dye.



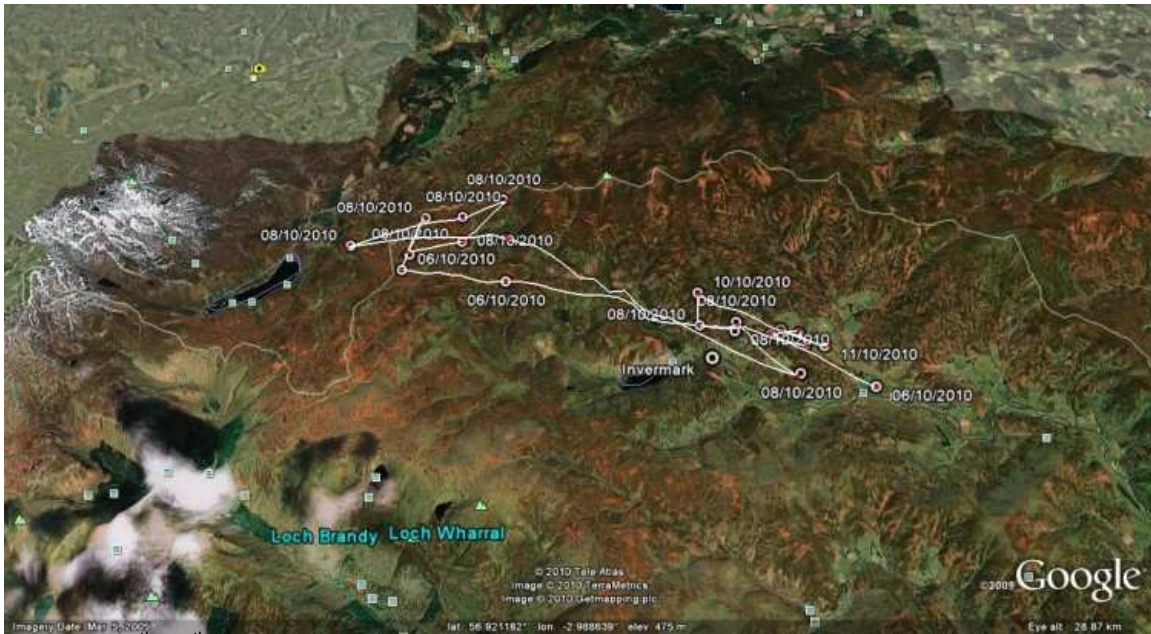
Locations 1st and 3rd October

09 October 2010

No change – Tanar was ranging over the southern slopes of Mount Keen and roosting at lower altitude in the Glen on nights of 5th/6th and 8th/9th October.

11 October 2010: Moving about more

She roosted near Tarfside in Glen Esk on 5th/6th October and then moved west 4 km by 5.46am, and by 10.14am was on the watershed to the east of Loch Muick and had already travelled at least 20 km. No data for the 7th but on the 8th she spent all day in the hills west of Mount Keen and east of Loch Muick. She then flew east to the Invermark area, where she remained on 10th and 11th October.



Locations 6th-11th October

16 October 2010: No change

She remained in the general area of Invermark to Tarfside, in Glen Esk 13th and 16th October.

18 October 2010: Off to Lochnagar

Tanar was over Creag Bhiorach, Loch Muick at 10.20am this morning, and then flew west of the loch to be on the ridge, at 800m altitude, above the Dubh Loch at 12.39pm. This is on the southern slopes of Lochnagar; she then flew back east to cross back into Angus and at 1.32pm was near the Round Hill of Mark. Instead of returning to her previous haunts she flew back to Loch Muick and was on the slopes of An t-Sron at the NW corner of the loch at 3.12pm. It was a blustery day, with strong NW winds; heavy rain showers, with snow on the high mountains, and long bright spells.



20 October 2010: Back in Glen Esk from Loch Muick

The weather in last couple of days has turned wintry with fresh snow on the mountains. On 20th October between 5.23pm and 9.42pm was in the Invermark area again, after previously visiting Loch Muick.



28 October 2010: Same area

She was in the Invermark area again very early this morning and then headed north over the moors.

30 October 2010: Slightly longer flights

Tanar was flying on the eastern slopes of Lochnagar at 5.39pm and then flew 21 kms back to the Invermark by 7.30pm.

02 November 2010: No change

She was on the south side of the River Esk early today in much the same area as her normal pattern of behaviour.

07 November 2010: Settled back on Glentanar side

Tanar moved to the north side of Mount Keen and on afternoon of 6th and overnight into the 7th November was just north of the Shiel of Glentanar. On the map the most accurate locations are dark blue, with pale blue accurate to 350 metres and green to 1km. Interesting that she has returned to the general area where she was reared.



09 November 2010: From Glentinar to Glen Lee

Tanar was still on Glentinar Estate at 7.50am this morning, but then flew at least 9.5kms to the south and at 10.45am was on the high ground to the north of the top end of Glen Lee.



Move south over the watershed into Angus

12 November 2010: In Glen Esk

Tanar was roosting overnight in Glen Esk.

14 November 2010: Above Loch Muick

Tanar was over a hill to the east of Loch Muick this morning.



16 November 2010: Back to Glentanar

She was back on Glentanar this afternoon, and after dusk, in the moonlight, she flew 3.3 km across the main glen to roost between 7.25pm and 7.51pm.



19 November 2010: No change

She was 1 mile NW of Mount Keen on Glentanar estate at 12.15 today.

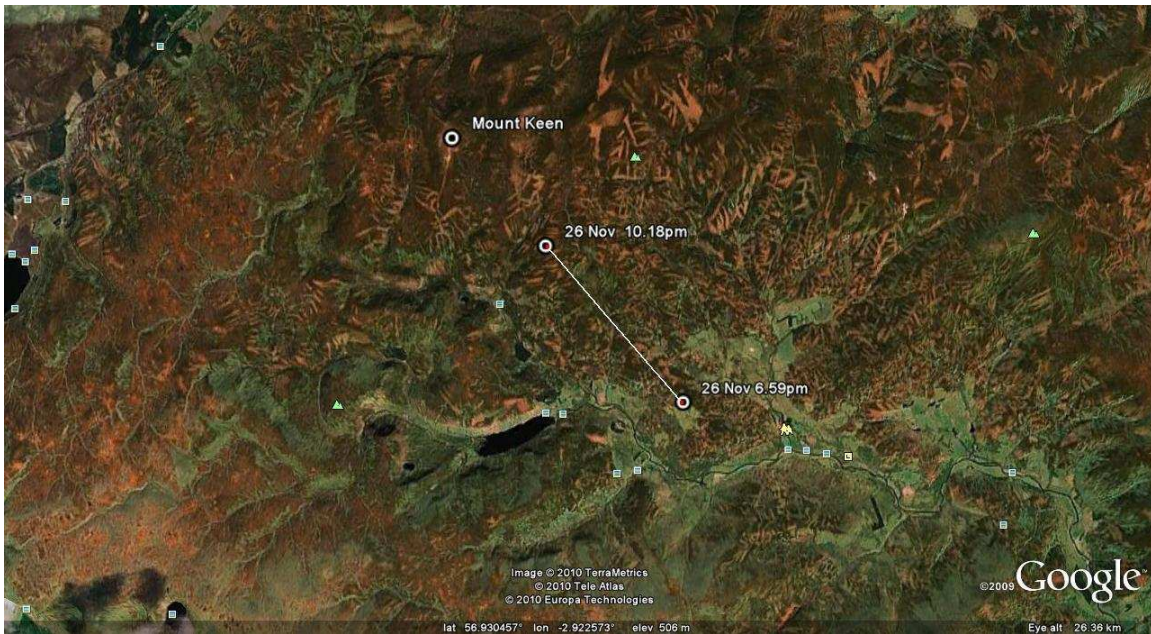
24 November 2010: Down to the low ground near Kirriemuir

Tanar has left the high ground, may be due to snow showers in the hills, and at 11.31 on 24th was on farmland between Ogil and Memus, 8 kms NW of Kirriemuir in Angus. This is 25 kms south of her recent haunts. This farmland stands below the heather hills of Ogil and Clova, the nearest moorland some 4 kms north. Later in the day poor quality locations were centred back around the south side of Mount Keen between 12.39 and 2.19pm, but I am not certain whether she went back north or not.



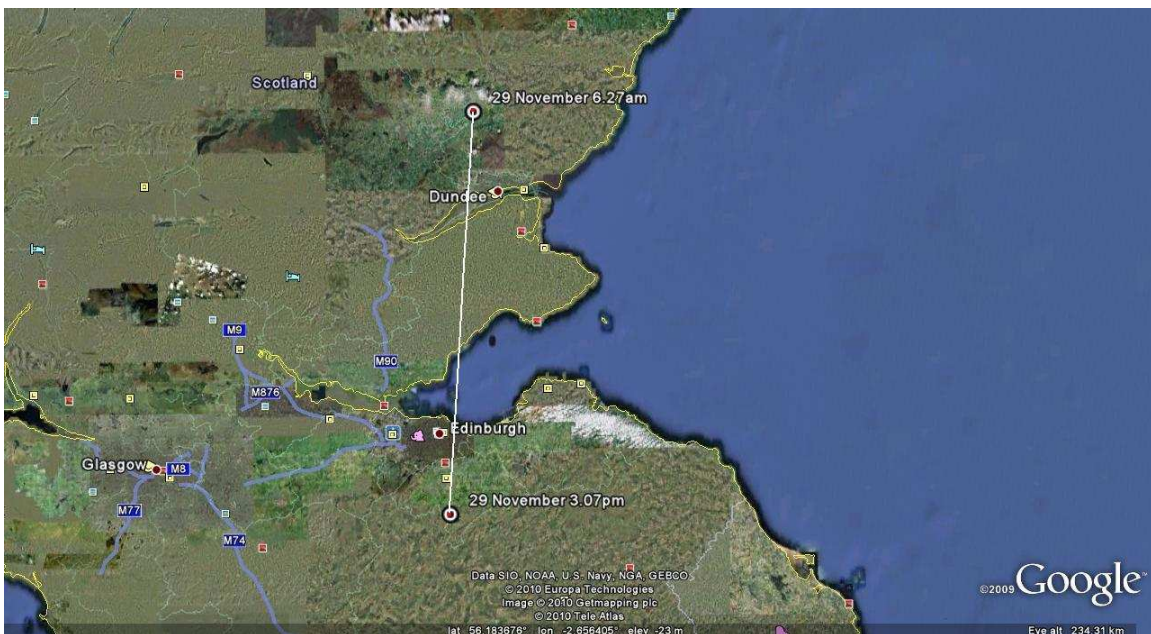
26 November 2010: Back in usual haunts

This evening Tanar was back in her usual haunts between Glen Esk and Mount Keen.



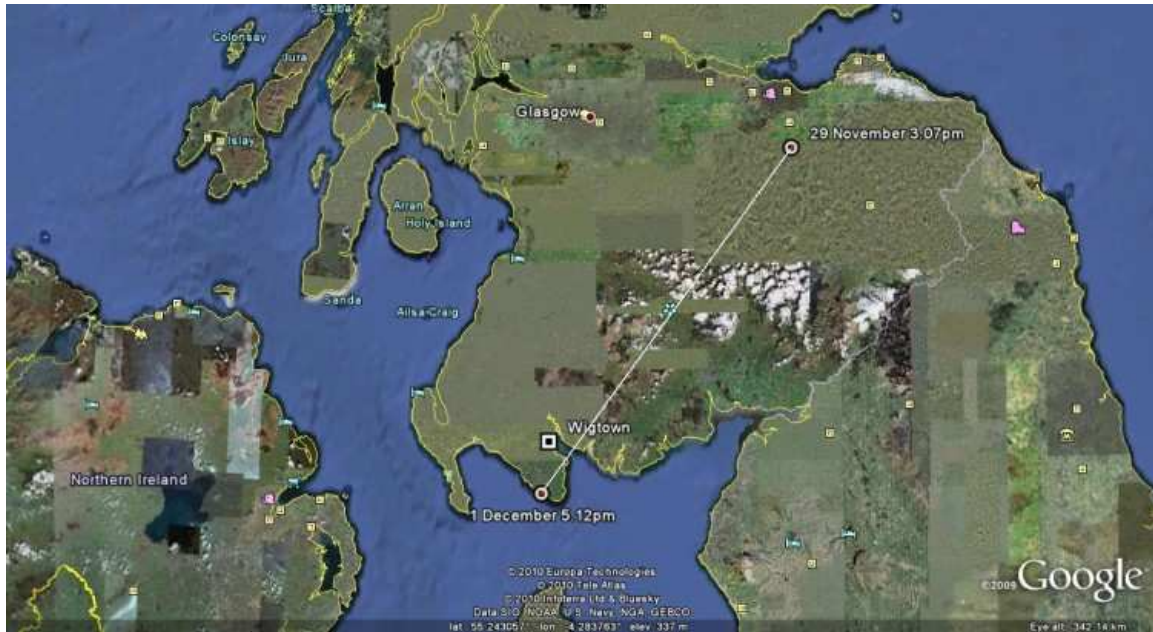
29 November 2010: Flew to Midlothian

At 6.27am this morning Tanar was over farmland at Linross, about 6 kms SW of Kirriemuir. This is about 30 kms south of her recent location in Glen Esk. She then flew through the day southwards, crossing the Tay, Fife and the Firth of Forth to be one km NW of Gladhouse Reservoir in Midlothian at 3.07pm. Her day's journey was 95kms. Scotland was covered in snow today with Arctic easterly winds.



01 December 2010: Whithorn peninsula near Wigtown

Tanar has made a 150 kms flight across southern Scotland and this afternoon was on the SW coast of the Machars at Portcastle Bay, to the south of Wigtown. Probably an area with least amount of snow in Scotland and a much better locality for a harrier in this weather than the Angus Glens. Between 5.12pm and 7.47 pm she had moved 4.7 km up along the coast. By coincidence she has pitched up exactly where a young Galloway golden eagle chick is living' which carries one of our transmitters. He's named Roxy.



Tanar's locations 29th November and 1st December



Locations at Port Castle Bay

04 December 2010: North to Ayrshire

Overnight 3rd/4th December, Tanar roosted in a moss (wet heath) near Merkland, 2 km SW of Kirkoswald in Ayrshire, 70 km north of her Wigtown location. Later, at midday she was in coastal farmlands just south of Turnberry village, some 5 km from the roost.



06 December 2010: Angus checks out roost site

I emailed an ornithologist friend, Angus Hogg, who lives close to where Tanar roosted on Saturday night and he checked it out this morning and sent some photos to give an impression of the area. Email from Angus “Attached are a few low-res photos of the area where Tanar roosted on 3-4/12 (3 taken this morning, and one in Feb this year). The roost site was in a slight depression on the moor (site known locally as Craigdow – after the Loch in the area) on rough grazing with heather and Juncus rush. One photo has the roost site marked – the others will give some idea of what the surrounding area looks like”



Tanar's roost site 3rd/4th December (Photo Angus Hogg)



Craigdow Loch February 2010 (Photo Angus Hogg)

06 December 2010: Down to south Ayrshire

Tanar moved back south and this evening was 22 kms south of her last location on 4th. She was just south of Colmonell, inland from Ballantrae.



09 December 2010: Near Loch Ryan

No good quality signals today but the five fixes suggest she was NE of Loch Ryan, probably in the Carlock Hill area.

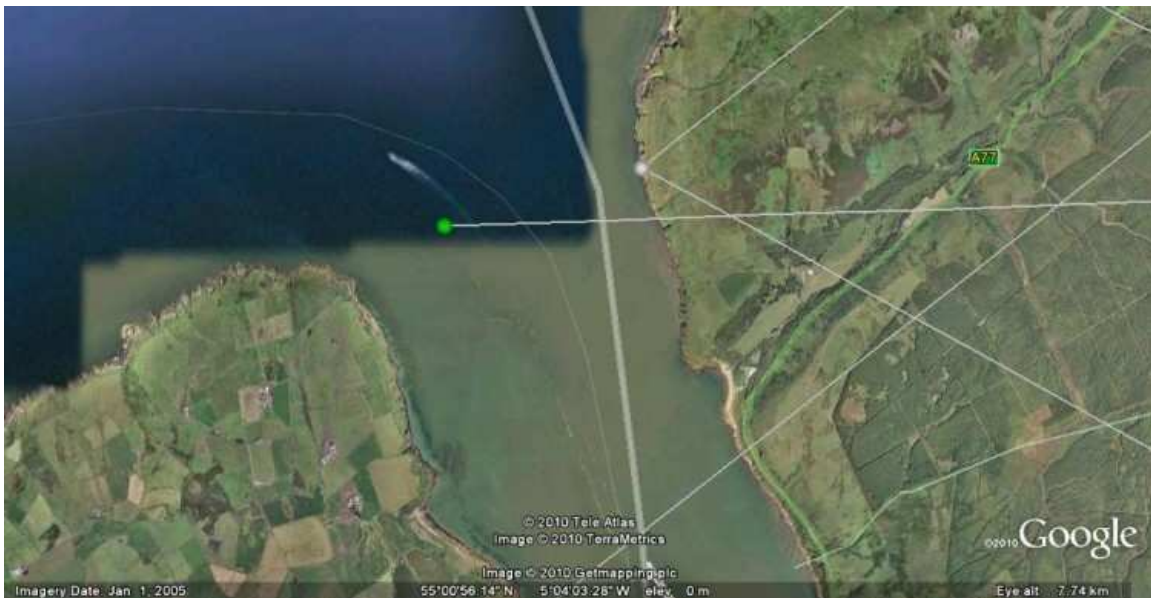
14 December 2010: At Glen App

Tanar was over farmland just south of Glen App at 12.2 pm today.



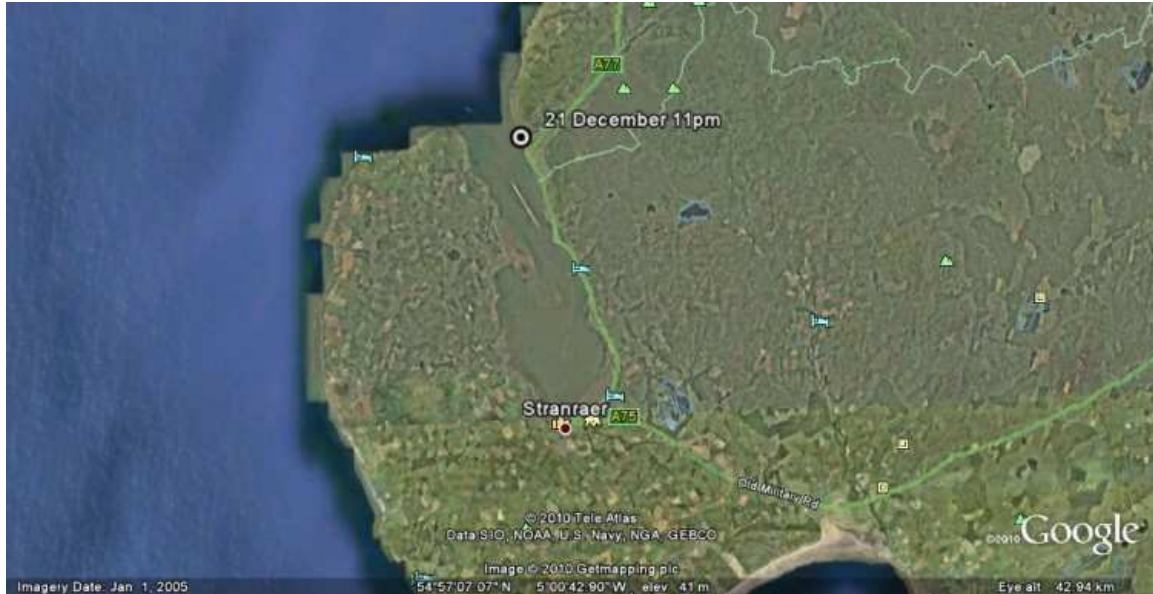
19 December 2010: Crossing Loch Ryan

At 4.37pm Tanar's location was over the mouth of Loch Ryan – it was a Class 1 accuracy signal so she may have been on either bank, the rest of the locations on 19th were less accurate.



22 December 2010: Near Loch Ryan

A Class 1 signal last night (2244GMT) put Tanar as some where along the north shore of Loch Ryan.



02 January 2011: Remaining in the Glen App area

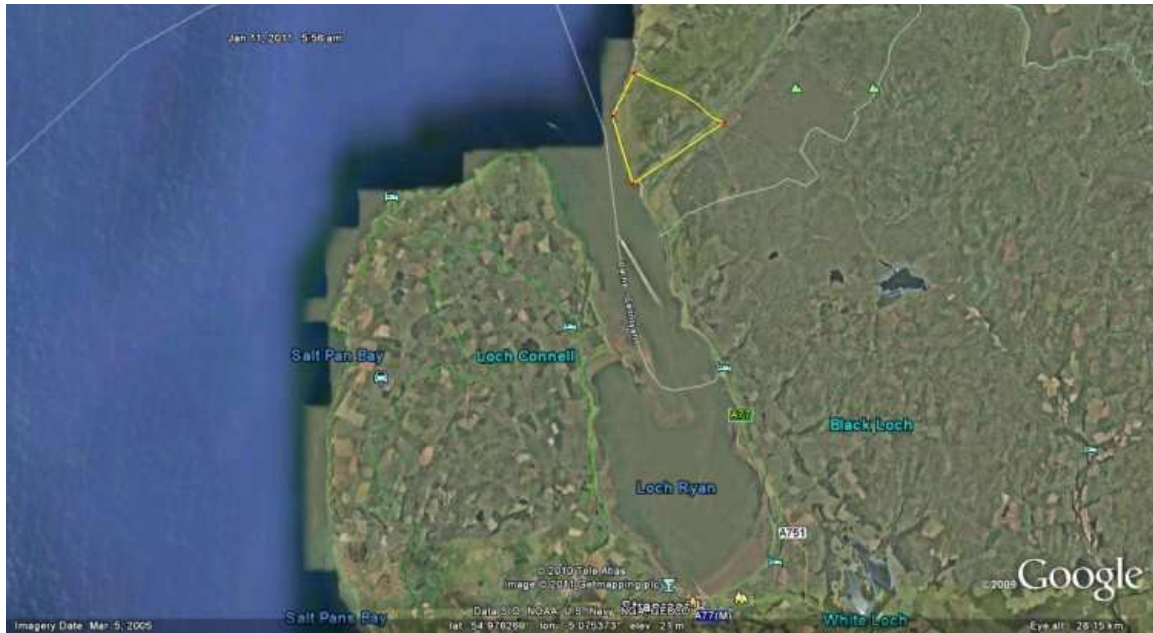
On 24th December, Tanar was over farmland just SW of Glen App at 11.30am, while on 29th, she flew north from near Carlock Hill at 11.54am to just NE of Glen App Castle by 1.05pm. Apparently mainly hunting over farmlands and rough grasslands.



Locations on 24th and 29th December

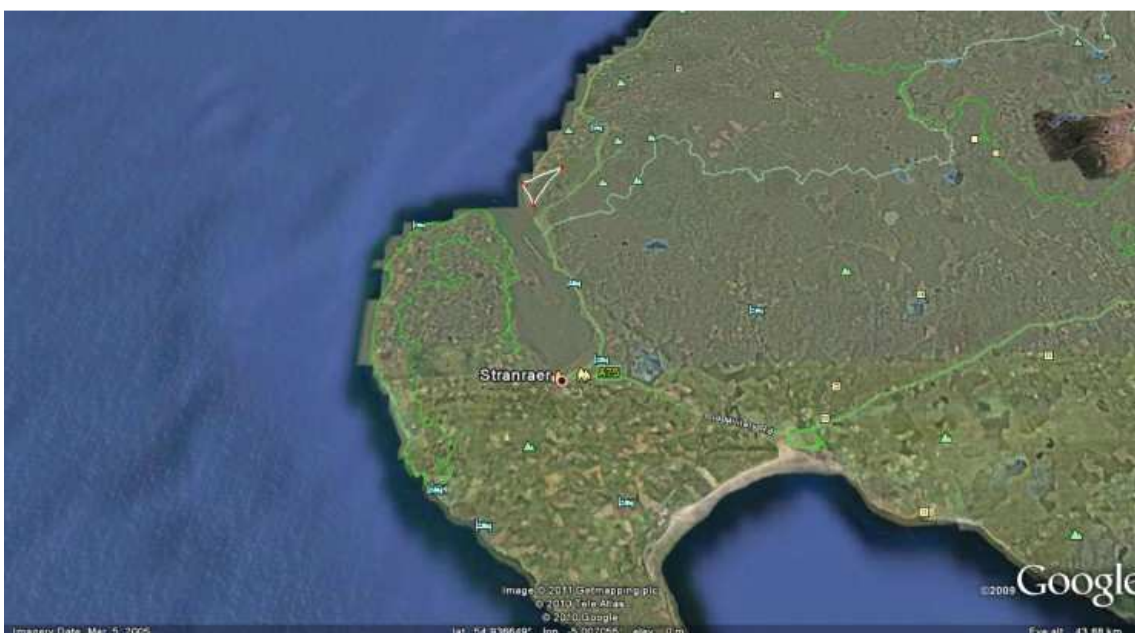
11 January 2011: Wintering at Loch Ryan

After the confusing Class 1 locations on 6th, 4 strong signals came in for early this morning. Tanar is still living close to the north side of Loch Ryan, where there is a mix of lowland coastal grazing, rough pastures and heather moorland on the hills.



16 January 2011: No change

Tanar continues to live in the area at the north side of Loch Ryan – during 11th to 16th January the locations were within an area of 3.2 square km.



18 January 2011: No change

Tanar still in same location at Loch Ryan today.

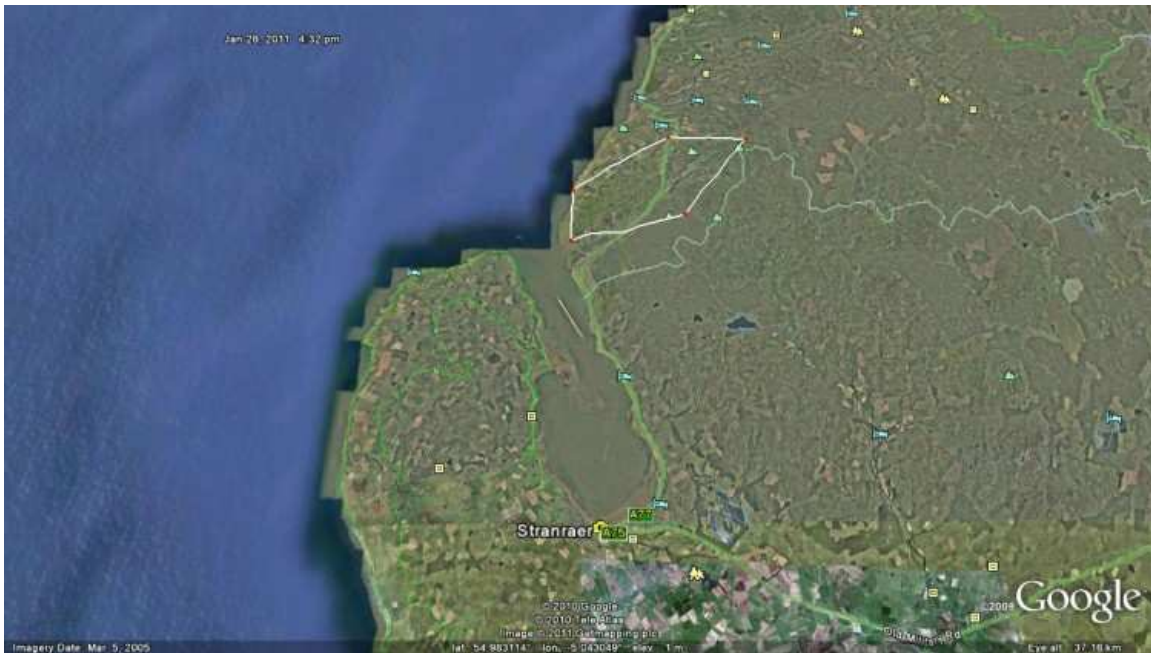
22 January 2011: No change

Recent locations in same area within a range of 15 square km.



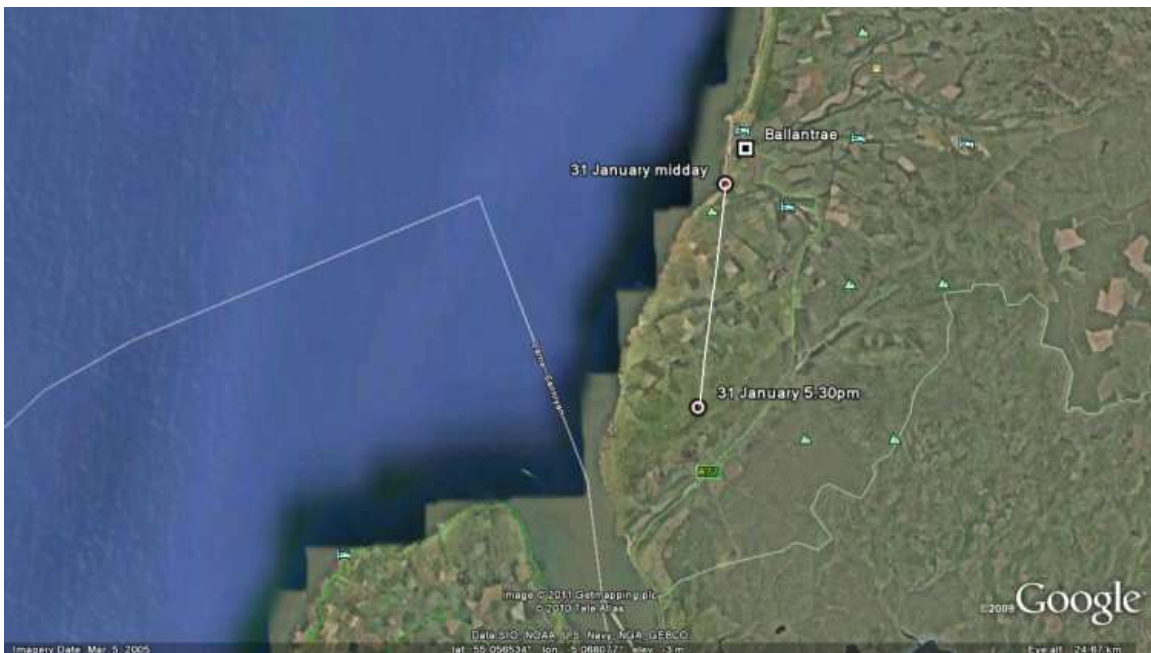
27 January 2011: No change

Locations all north of Loch Ryan in an area of 27 square km.



31 January 2011: Good series of locations in same area

After missing a transmission date, Tanar gave a good series of signals today and showed that she was still living in the same area between Loch Ryan and Ballantrae. I was relieved – there have been no signals from the male hen harrier, Glen, despite the improving quality of sunlight to charge the solar battery. I think he probably came to grief.

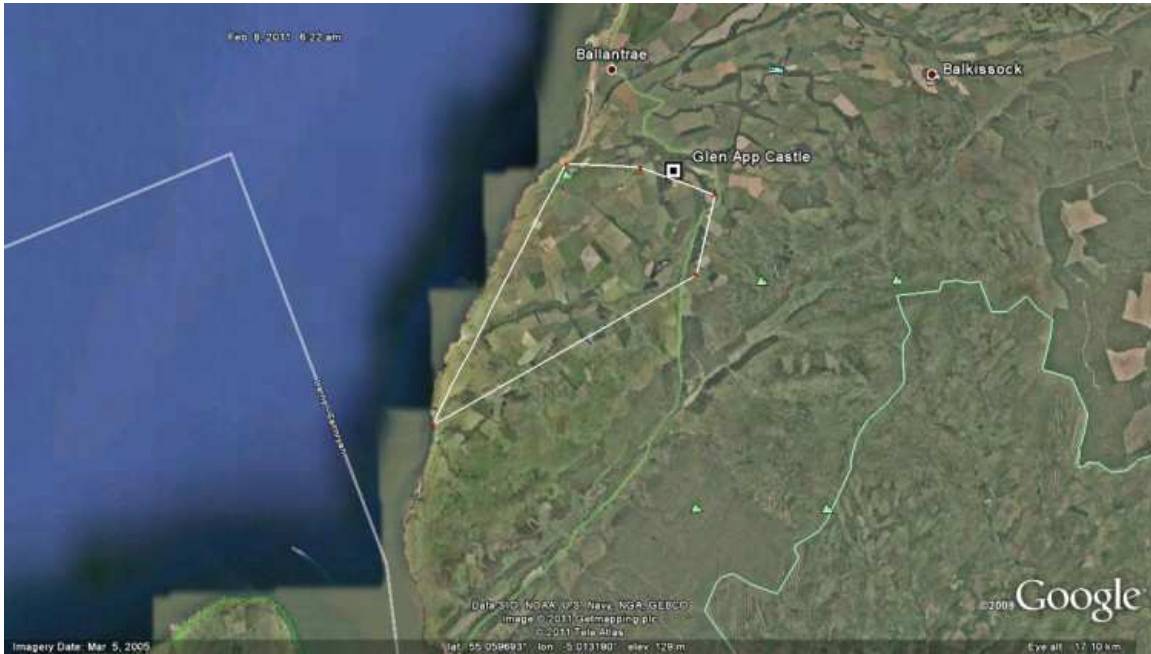


05 February 2011: No change

Still in the same area.

08 February 2011: No change

Tanar still living between Loch Ryan and Glen App, being to the south end on 5th and top end today. Living in an area of 9 square km.



12 February 2011: No change

Mainly using northern part of her winter range in last 4 days.

19 February 2011: No change

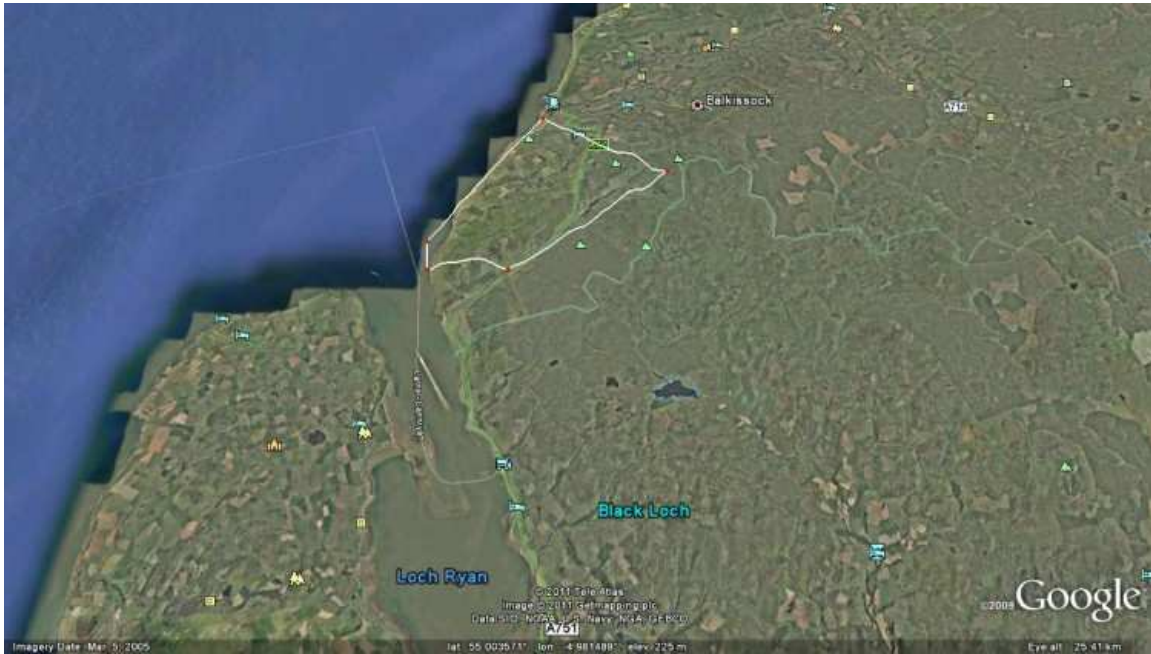
Last night roosted in same area of rough ground.

23 February 2011: No change

Tanar remains in the northern part of her winter range in an area of 10 square km 19th -23rd February.

28 February 2011: Moved to south end of range

Tanar was in the north end of the winter range on 20th and 23rd, and on the 25th was living at the south end on the north shore of Loch Ryan – her week's range has been 30 square km.



03 March 2011: No change

Tanar moved back to north part of winter range on on March 2nd – 3rd.

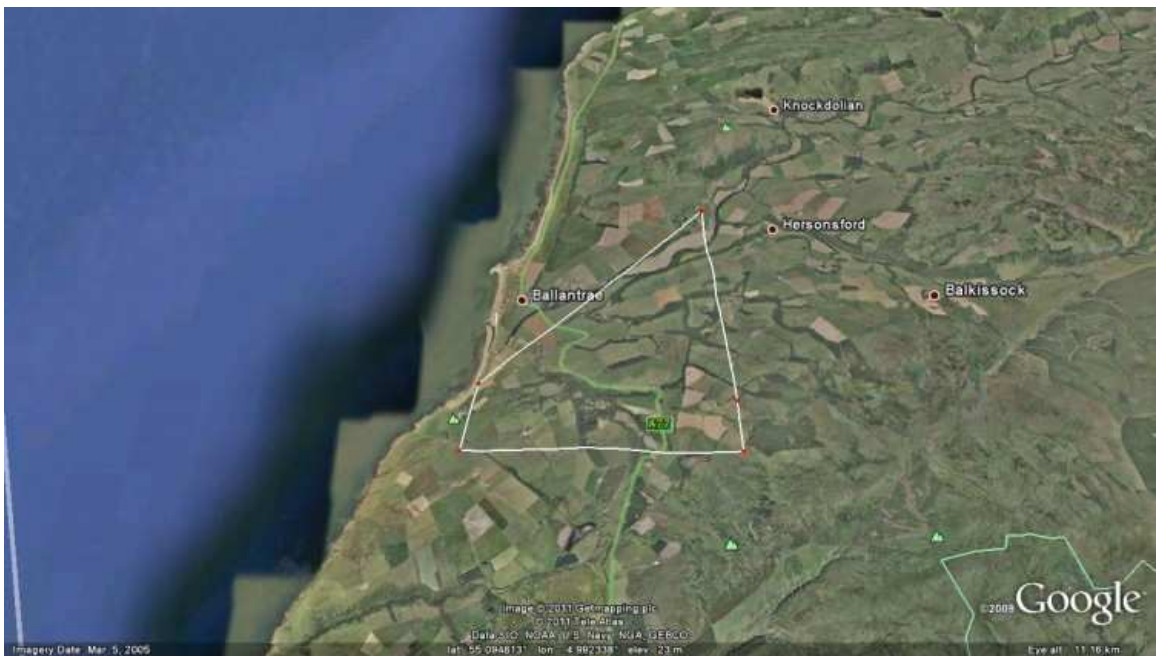
09 March 2011: No change

Tanar was in the southern half of her 19 square kms range on 5th March and in the northern section on 8th March.



13 March 2011: Keeping at north end of winter range

Tanar was in the north end of the winter range and moving a little further north, within an area of 7.8 square km.



20 March 2011: Moved to Loch Ryan end

Tanar was ranging to the north of the range on 13th & 15th March, and then flew south and was at the south end on 17th, 18th and 20th March.



25 March 2011: No change

Tanar has remained in southern part of her range, just north of Loch Ryan.

26 March 2011: No change

Tanar remained in the hills north of Loch Ryan, in the south part of her winter range on March 22nd and 25th.

31 March 2011: Still there

Tanar was in southern part of her winter range on 26th, 27th and 30th March, but on night of 29th-20th March appeared to roost on moorland about 20 km ESE, and then returned. As spring comes in she may start to move around more.

03 April 2011: No change

Roosted last night midway between north and south ends of winter range.

10 April 2011: No change

Tanar has remained in the southern half of the winter range.

14 April 2011: Still in same area

Tanar has remained in same southern area of hilly moorland north of Loch Ryan, maybe a little more ranging.

17 April 2011: A little more movement

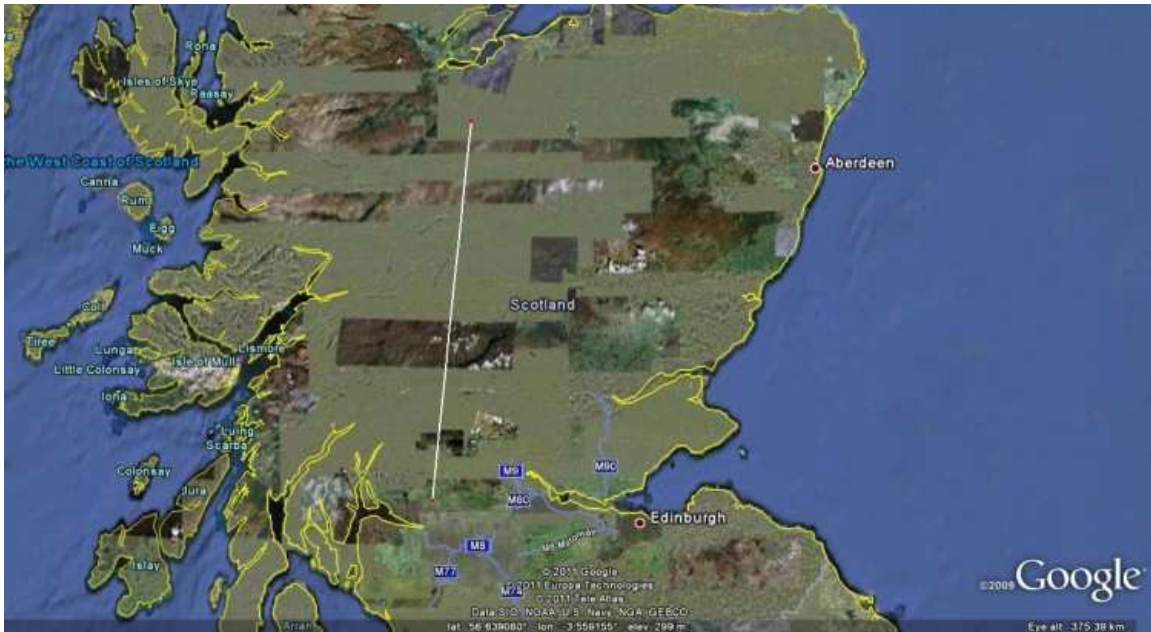
Tanar has ranged a little more to the east in the last few days and has been within an area of 23 square km north of Loch Ryan

19 April 2011: Flew to the Dumbarton Moors

Tanar was still in the hills north of Loch Ryan on 16th, but by evening of 18th she had moved 115km NNE and was roosting on the West Dumbarton moors, west of Craighat and the A809. This is a first movement of the spring – I wonder where she will go and whether she will try to find a nesting area.

21 April 2011: Moves to Inverness area

Tanar migrated north on 21st April. She was just north of the east end of Loch Rannoch at 11.20am, south of Newtonmore at 1.30pm, by the Dulnan River on Alvie Estate at 2.43pm and on the north side of Coignafearn at 6pm. At 8:25 pm she was on the heather moors just south of Croachy in Strathnairn, SW of Inverness. She had travelled 69 km between 11.30am and 8.25pm.



Movement between West Dumbarton and Inverness area



Locations during flight on April 21st

25 April 2011: Back to Perthshire

Tanar headed straight back to Perthshire and overnight 24th she was just south east of Foss on the south side of Loch Tummel.

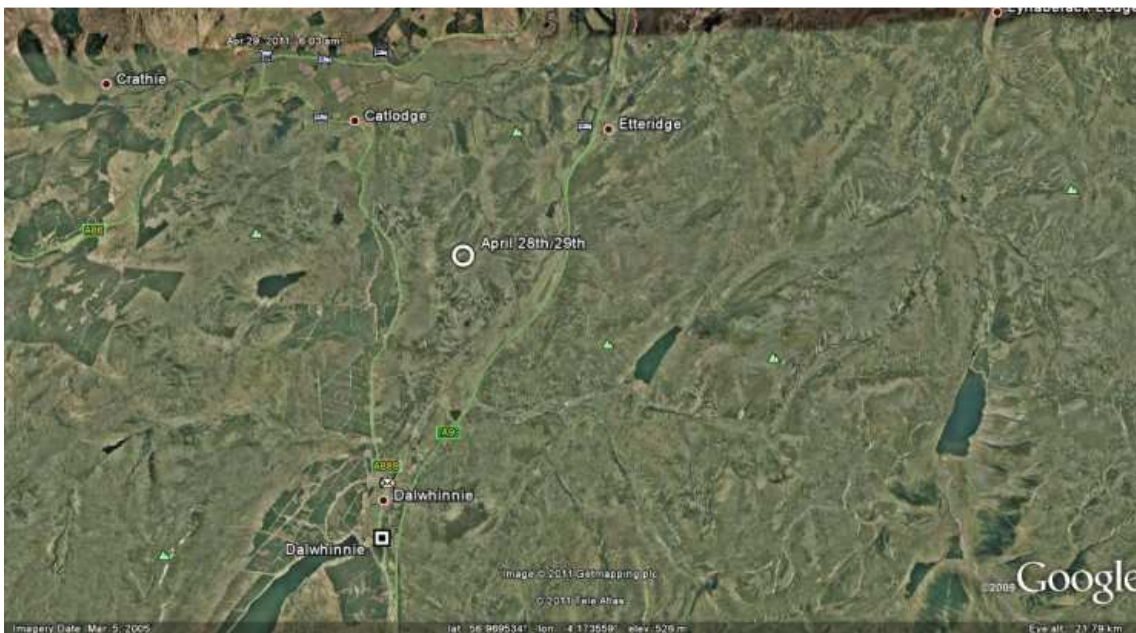
26 April 2011: North over Drumochter again

Tanar decided to go north again in this beautiful weather and at 10.27 am was on the moors between Newtonmore and Catlodge, 37 km NNW of her Loch Tummel location. She then hunted south-east across the hills towards the A9 road. Later at 1.50pm she was in Glen Tromie, 11 km ENE.



29 April 2011: At Dalwhinnie

Tanar was roosting on the hills just north of Dalwhinnie last night.



09 May 2011: Settled near Dalwhinnie?

Tanar remains on the same area of moorland just north of Dalwhinnie and was roosting there overnight 8th/9th May.

13 May 2011: Same area

Tanar was on the same area of moorland at 4.04pm and 7.19pm today; her range in last day has been 5 square km – but the data is not GPS like the larger species.

18 May 2011: No change

Tanar still living on the moorlands north of Dalwhinnie.

19 May 2011: No change

Still in same area.

23 May 2011: No change

Still in the same area. Wonder if she will find a mate. I've seen passing hen harriers in two areas in the last three days, so I guess last year's surviving young are searching for territories and mates. Probably easier to find the first than the second.

25 May 2011: No change

Tanar still living in same area of moorlands.

28 May 2011: No change

Tanar is still living on the moorland north of Dalwhinnie.

02 June 2011: Flight back to Glen Esk/Aberdeenshire

Tanar was still at her usual haunts on the moorland north of Dalwhinnie at 10.31pm on 30th May, but by 8.52am on 2nd June she had flown 82 km east to Glen Esk in Angus. She had returned to her favourite areas used last autumn.



05 June 2011: Flight around last year's locations

On 4th June, Tanar was on Balmoral at 4.12pm, on hills just west of Glentnar (her natal location), in Glen Esk at 8.59pm and just north of Loch Lee at 11.30pm. She had flown a minimum of 59km during the day, and probably much more exploring of areas she used last summer and autumn.

12 June 2011: Over to Glen Dye

Overnight and early morning Tanar had moved north and was in Aberdeenshire in the Glen Dye area.



Blue dot is accurate location for 4.53am on June 12th

15 June 2011: No change

Tanar was in Glen Esk near Auchmull at 10.44am on 14th and north to near Balloch, Finzean by 3.42pm.

27 June 2011: Lost, probably killed

No transmissions were received on 17th or 20th June. Looks as though we have lost Tanar – last transmissions on 14th June- when activity counter was showing live status on the last transmission of the session at 6.14pm. There have been no transmissions on 17th or 20th June – and still none since – so she has gone. Such a clear cut loss suggests she has been killed. On 12th June, the early morning locations showed she had roosted overnight somewhere in the Water of Avens catchment. On June 14th she was in Glen Esk early morning and north of Glen Dye in the afternoon as reported in previous post. The loss has been reported to the Grampian Wildlife Crime Officer but there are no clear leads to what happened. This means that both of the young harriers from last year have died.